



[Go to Product page](#)

Datasheet for ABIN1307755

## IL1R1 Protein (AA 18-127) (GST tag)

### 1 Image

#### Overview

Quantity:	10 µg
Target:	IL1R1
Protein Characteristics:	AA 18-127
Origin:	Human
Source:	Wheat germ
Protein Type:	Recombinant
Purification tag / Conjugate:	This IL1R1 protein is labelled with GST tag.
Application:	Western Blotting (WB), ELISA, Affinity Purification (AP), Antibody Array (AA)

#### Product Details

Purpose:	IL1R1 (Human) Recombinant Protein (Q01)
Sequence:	LEADKCKERE EKILVSSAN EIDVRPCPLN PNEHKGTITW YKDDSKTPVS TEQASRIHQH KEKLWFVPAK VEDSGHYCYV VRNSSYCLRI KISAKFVENE PNLCYNAQAI
Characteristics:	Human IL1R1 partial ORF ( NP_000868, 18 a.a. - 127 a.a.) recombinant protein with GST-tag at N-terminal.
Purification:	in vitro wheat germ expression system

#### Target Details

Target:	IL1R1
Alternative Name:	IL1R1 ( <a href="#">IL1R1 Products</a> )

## Target Details

---

Background: Full Gene Name: interleukin 1 receptor, type I  
Synonyms: CD121A,D2S1473,IL-1R-alpha,IL1R,IL1RA,P80

---

Gene ID: 3554

---

NCBI Accession: [NM\\_000877](#)

---

Pathways: [NF-kappaB Signaling](#), [Carbohydrate Homeostasis](#), [Cancer Immune Checkpoints](#)

---

## Application Details

---

Application Notes: Optimal working dilution should be determined by the investigator.

---

Comment: Preparation method: in vitro, wheat germ expression system  
Product Quality tested by: 12.5% SDS-PAGE Stained with Coomassie Blue.

---

Restrictions: For Research Use only

---

## Handling

---

Buffer: 50 mM Tris-HCl, 10 mM reduced Glutathione, pH =8.0 in the elution buffer.

---

Handling Advice: Aliquot to avoid repeated freezing and thawing.

---

Storage: -80 °C

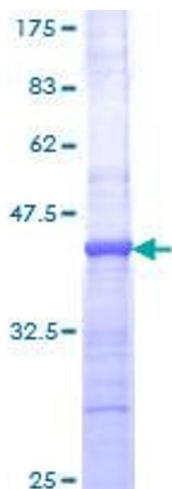
---

Storage Comment: Best use within three months from the date of receipt of this protein.

---

## Images

---



**Image 1.**