



[Go to Product page](#)

Datasheet for ABIN1307761

IL1RAPL1 Protein (AA 151-250) (GST tag)

1 Image

Overview

Quantity:	10 µg
Target:	IL1RAPL1
Protein Characteristics:	AA 151-250
Origin:	Human
Source:	Wheat germ
Protein Type:	Recombinant
Purification tag / Conjugate:	This IL1RAPL1 protein is labelled with GST tag.
Application:	Western Blotting (WB), ELISA, Affinity Purification (AP), Antibody Array (AA)

Product Details

Purpose:	IL1RAPL1 (Human) Recombinant Protein (Q01)
Sequence:	FEKAELSKSK EISCRDIEDF LLPTREPEIL WYKECRTKTW RPSIVFKRDT LLIREVREDD IGNYTCELKY GGFVVRTTE LTVTAPLTDK PPKLLYPMES
Characteristics:	Human IL1RAPL1 partial ORF (NP_055086.1, 151 a.a. - 250 a.a.) recombinant protein with GST-tag at N-terminal.
Purification:	in vitro wheat germ expression system

Target Details

Target:	IL1RAPL1
Alternative Name:	IL1RAPL1 (IL1RAPL1 Products)

Target Details

Background:	Full Gene Name: interleukin 1 receptor accessory protein-like 1 Synonyms: IL1R8,IL1RAPL,MRX10,MRX21,MRX34,OPHN4,TIGIRR-2
Gene ID:	11141
NCBI Accession:	NM_014271
Pathways:	Synaptic Membrane , Growth Factor Binding

Application Details

Application Notes:	Optimal working dilution should be determined by the investigator.
Comment:	Preparation method: in vitro, wheat germ expression system Product Quality tested by: 12.5% SDS-PAGE Stained with Coomassie Blue.
Restrictions:	For Research Use only

Handling

Buffer:	50 mM Tris-HCl, 10 mM reduced Glutathione, pH =8.0 in the elution buffer.
Handling Advice:	Aliquot to avoid repeated freezing and thawing.
Storage:	-80 °C
Storage Comment:	Best use within three months from the date of receipt of this protein.

Images

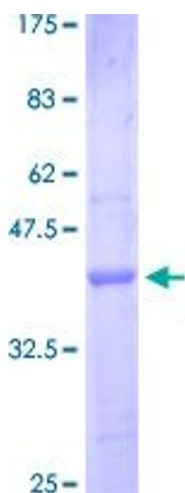


Image 1.