



[Go to Product page](#)

Datasheet for ABIN1307778
IL-22 Protein (AA 1-179) (GST tag)

1 Image

Overview

Quantity:	10 µg
Target:	IL-22 (IL22)
Protein Characteristics:	AA 1-179
Origin:	Human
Source:	Wheat germ
Protein Type:	Recombinant
Purification tag / Conjugate:	This IL-22 protein is labelled with GST tag.
Application:	Western Blotting (WB), ELISA, Affinity Purification (AP), Antibody Array (AA)

Product Details

Purpose:	IL22 (Human) Recombinant Protein (P01)
Sequence:	MAALQKSVSS FLMGTLATSC LLLLALLVQG GAAAPISSHC RLDKSNFQQP YITNRTFMLA KEASLADNNT DVRLIGEKLK F HGVSMSERCY LMKQVLNFTL EEVLFPPQSDR FQPYMQEVPV FLARLSNRLS TCHIEGDDLH IQRNVQKLKD TVKKLGESGE IKAIGELDLL FMSLRNACI
Characteristics:	Human IL22 full-length ORF (NP_065386.1, 1 a.a. - 179 a.a.) recombinant protein with GST-tag at N-terminal.
Purification:	in vitro wheat germ expression system

Target Details

Target:	IL-22 (IL22)
Alternative Name:	IL22 (IL22 Products)

Target Details

Background:	Full Gene Name: interleukin 22 Synonyms: IL-21,IL-22,IL-D110,IL-TIF,IL21,ILTIF,MGC79382,MGC79384,TIFIL-23,TIFa,zcyto18
Gene ID:	50616
NCBI Accession:	NM_020525

Application Details

Application Notes:	Optimal working dilution should be determined by the investigator.
Comment:	Preparation method: in vitro, wheat germ expression system Product Quality tested by: 12.5% SDS-PAGE Stained with Coomassie Blue.
Restrictions:	For Research Use only

Handling

Buffer:	50 mM Tris-HCl, 10 mM reduced Glutathione, pH =8.0 in the elution buffer.
Handling Advice:	Aliquot to avoid repeated freezing and thawing.
Storage:	-80 °C
Storage Comment:	Best use within three months from the date of receipt of this protein.

Images

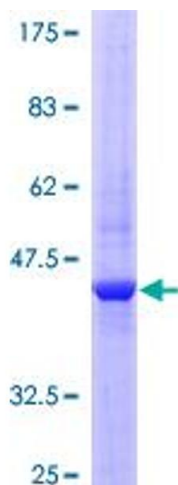


Image 1.