



[Go to Product page](#)

Datasheet for ABIN1307806

IL28RA Protein (AA 51-150) (GST tag)

1 Image

Overview

Quantity:	10 µg
Target:	IL28RA
Protein Characteristics:	AA 51-150
Origin:	Human
Source:	Wheat germ
Protein Type:	Recombinant
Purification tag / Conjugate:	This IL28RA protein is labelled with GST tag.
Application:	ELISA, Western Blotting (WB), Affinity Purification (AP), Antibody Array (AA)

Product Details

Purpose:	IL28RA (Human) Recombinant Protein (Q01)
Sequence:	QDVTYFVAYQ SSPTRRRWRE VEECAGTKEL LCSMMCLKKQ DLYNKFKGRV RTVSPSSKSP WVESEYLDYL FEVEPAPPVL VLTQTEEILS ANATYQLPPC
Characteristics:	Human IL28RA partial ORF (NP_734464, 51 a.a. - 150 a.a.) recombinant protein with GST-tag at N-terminal.
Purification:	in vitro wheat germ expression system

Target Details

Target:	IL28RA
Alternative Name:	IL28RA (IL28RA Products)

Target Details

Background:	Full Gene Name: interleukin 28 receptor, alpha (interferon, lambda receptor) Synonyms: CRF2/12,IFNLR,IFNLR1,IL-28R1,LICR2
Gene ID:	163702
NCBI Accession:	NM_170743

Application Details

Application Notes:	Optimal working dilution should be determined by the investigator.
Comment:	Preparation method: in vitro, wheat germ expression system Product Quality tested by: 12.5% SDS-PAGE Stained with Coomassie Blue.
Restrictions:	For Research Use only

Handling

Buffer:	50 mM Tris-HCl, 10 mM reduced Glutathione, pH =8.0 in the elution buffer.
Handling Advice:	Aliquot to avoid repeated freezing and thawing.
Storage:	-80 °C
Storage Comment:	Best use within three months from the date of receipt of this protein.

Images

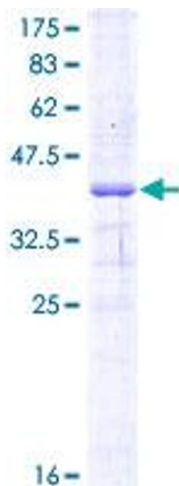


Image 1.