



[Go to Product page](#)

Datasheet for ABIN1307834

## IL-6 Protein (AA 1-212) (GST tag)

### 1 Image

#### Overview

Quantity:	10 µg
Target:	IL-6 (IL6)
Protein Characteristics:	AA 1-212
Origin:	Human
Source:	Wheat germ
Protein Type:	Recombinant
Purification tag / Conjugate:	This IL-6 protein is labelled with GST tag.
Application:	Western Blotting (WB), ELISA, Antibody Array (AA), Affinity Purification (AP)

#### Product Details

Purpose:	IL6 (Human) Recombinant Protein (P01)
Sequence:	MNSFSTSAFG PVAFSLGLLL VLPAAFPAPV PPGEDSKDVA APHRQPLTSS ERIDKQIRYI LDGISALRKE TCNKSNMCES SKEALAENNL NLPKMAEKDG CFQSGFNEET CLVKIITGLL EFEVYLEYLQ NRFESSEEQA RAVQMSTKVL IQFLQKKAKN LDAITTPDPT TNASLLTKLQ AQNQWLQDMT THLILRSFKE FLQSSLRALR QM
Characteristics:	Human IL6 full-length ORF ( AAH15511.1, 1 a.a. - 212 a.a.) recombinant protein with GST-tag at N-terminal.
Purification:	in vitro wheat germ expression system

#### Target Details

Target:	IL-6 (IL6)
---------	------------

## Target Details

Alternative Name:	IL6 (IL6 Products)
Background:	Full Gene Name: interleukin 6 (interferon, beta 2) Synonyms: BSF2,HGF,HSF,IFNB2,IL-6
Gene ID:	3569
Pathways:	<a href="#">TLR Signaling</a> , <a href="#">Hormone Transport</a> , <a href="#">Negative Regulation of Hormone Secretion</a> , <a href="#">Myometrial Relaxation and Contraction</a> , <a href="#">Positive Regulation of Immune Effector Process</a> , <a href="#">Production of Molecular Mediator of Immune Response</a> , <a href="#">Regulation of Carbohydrate Metabolic Process</a> , <a href="#">Autophagy</a> , <a href="#">Cell RedoxHomeostasis</a> , <a href="#">Cancer Immune Checkpoints</a> , <a href="#">Inflammasome</a>

## Application Details

Application Notes:	Optimal working dilution should be determined by the investigator.
Comment:	Preparation method: in vitro, wheat germ expression system Product Quality tested by: 12.5% SDS-PAGE Stained with Coomassie Blue.
Restrictions:	For Research Use only

## Handling

Buffer:	50 mM Tris-HCl, 10 mM reduced Glutathione, pH =8.0 in the elution buffer.
Handling Advice:	Aliquot to avoid repeated freezing and thawing.
Storage:	-80 °C
Storage Comment:	Best use within three months from the date of receipt of this protein.

## Images

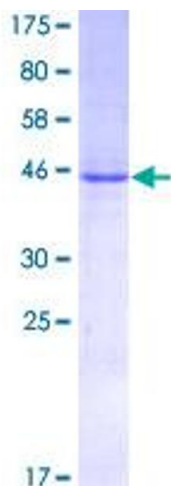


Image 1.