



[Go to Product page](#)

Datasheet for ABIN1307845

IL7R Protein (AA 1-459) (GST tag)

1 Image

Overview

Quantity:	10 µg
Target:	IL7R
Protein Characteristics:	AA 1-459
Origin:	Human
Source:	Wheat germ
Protein Type:	Recombinant
Purification tag / Conjugate:	This IL7R protein is labelled with GST tag.
Application:	Western Blotting (WB), ELISA, Affinity Purification (AP), Antibody Array (AA)

Product Details

Purpose:	IL7R (Human) Recombinant Protein (P01)
Sequence:	MTILGTTFGM VFSLLQVVSG ESGYAQNGDL EDAELDDYTF SCYSQLEVNG SQHSLTCAFE DPDVNTTNLE FEICGALVEV KCLNFRKLQE IYFIETKKFL LIGKSNICVK VGEKSLTCKK IDLTTIVKPE APFDLSVIYR EGANDFVWTF NTSHLQKKYV KVLMDHVAYR QEKDENKWITH VNLSSTKLTL LQRKLQPAAM YEIKVRSIPD HYFKGFWSEW SPSYYFRTPE INNSSGEMDP ILLTISILSF FSVALLVILA CVLWKKRIKP IVWPSLPDHK KTLEHLCKKP RKNLNVSNP ESFLDCQIHR VDDIQARDEV EGFLQDTFPQ QLEESEKQRL GGDVQSPNCP SEDVVITPES FGRDSSLTCL AGNVSACDAP ILSSGSLDC RESGKNGPHV YQDLLLSLGT TNSTLPPPFSS LQSGILTLNP VAQQQPILTS LGSNQEEAYV TMSSFYQNG
Characteristics:	Human IL7R full-length ORF (AAH67539.1, 1 a.a. - 459 a.a.) recombinant protein with GST-tag at N-terminal.

Product Details

Purification: in vitro wheat germ expression system

Target Details

Target: IL7R

Alternative Name: IL7R ([IL7R Products](#))

Background: Full Gene Name: interleukin 7 receptor
Synonyms: CD127,CDW127,IL-7R-alpha,IL7RA,ILRA

Gene ID: 3575

Pathways: [JAK-STAT Signaling](#), [Regulation of Leukocyte Mediated Immunity](#), [Production of Molecular Mediator of Immune Response](#), [Regulation of Cell Size](#)

Application Details

Application Notes: Optimal working dilution should be determined by the investigator.

Comment: Preparation method: in vitro, wheat germ expression system
Product Quality tested by: 12.5% SDS-PAGE Stained with Coomassie Blue.

Restrictions: For Research Use only

Handling

Buffer: 50 mM Tris-HCl, 10 mM reduced Glutathione, pH =8.0 in the elution buffer.

Handling Advice: Aliquot to avoid repeated freezing and thawing.

Storage: -80 °C

Storage Comment: Best use within three months from the date of receipt of this protein.

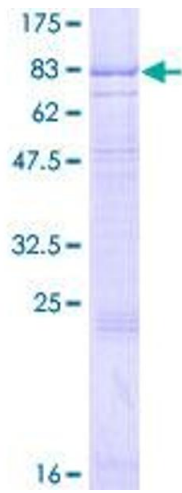


Image 1.