

Datasheet for ABIN1307858

Interleukin enhancer-binding factor 3 (ILF3) (AA 1-158) protein (GST tag)



[Go to Product page](#)

1 Image

Overview

Quantity:	10 µg
Target:	Interleukin enhancer-binding factor 3 (ILF3)
Protein Characteristics:	AA 1-158
Origin:	Human
Source:	Wheat germ
Protein Type:	Recombinant
Purification tag / Conjugate:	GST tag
Application:	Western Blotting (WB), ELISA, Affinity Purification (AP), Antibody Array (AA)

Product Details

Purpose:	ILF3 (Human) Recombinant Protein (P01)
Sequence:	MCSCPISSPG HIKGLGQEET PVRSDLVFK ERMPACNTHG EGHFLAPPAK YLQTLGRRLLH SQHRTSLNSF RISDHHHVQV SECRPTTRDG FHPPALLQIH AAQARAWRE QLLSTAPLEP SPRSRSSPVL MMPSCCWPEP VSQQLQDDTG FRNMWLSP
Characteristics:	Human ILF3 full-length ORF (AAH03086, 1 a.a. - 158 a.a.) recombinant protein with GST-tag at N-terminal.
Purification:	in vitro wheat germ expression system

Target Details

Target:	Interleukin enhancer-binding factor 3 (ILF3)
Alternative Name:	ILF3 (ILF3 Products)

Target Details

Background: Full Gene Name: interleukin enhancer binding factor 3, 90 kDa
Synonyms: CBTF,DRBF,DRBP76,MMP4,MPHOSPH4,MPP4,NF-AT-90,NF110,NF90,NFAR,NFAR-1,NFAR2,TCP110,TCP80

Gene ID: 3609

Pathways: [M Phase](#)

Application Details

Application Notes: Optimal working dilution should be determined by the investigator.

Comment: Preparation method: in vitro, wheat germ expression system
Product Quality tested by: 12.5% SDS-PAGE Stained with Coomassie Blue.

Restrictions: For Research Use only

Handling

Buffer: 50 mM Tris-HCl, 10 mM reduced Glutathione, pH =8.0 in the elution buffer.

Handling Advice: Aliquot to avoid repeated freezing and thawing.

Storage: -80 °C

Storage Comment: Best use within three months from the date of receipt of this protein.

Images

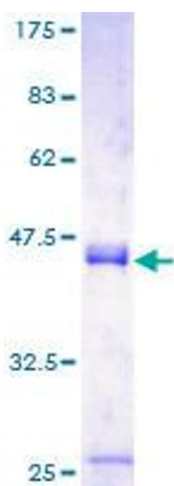


Image 1.