

Datasheet for ABIN1307869
ILVBL Protein (AA 1-224) (GST tag)



[Go to Product page](#)

1 Image

Overview

Quantity:	25 µg
Target:	ILVBL
Protein Characteristics:	AA 1-224
Origin:	Human
Source:	Wheat germ
Protein Type:	Recombinant
Purification tag / Conjugate:	This ILVBL protein is labelled with GST tag.
Application:	ELISA, Western Blotting (WB), Affinity Purification (AP), Antibody Array (AA)

Product Details

Purpose:	ILVBL (Human) Recombinant Protein (P01)
Sequence:	METPAAAAPA GSLFPSLLLL ACGTLVAALL GAAHRLGLFY QLLHKVDKAS VRHGGENVAA VLRAHGVRFI FTLVGGHISP LLVACEKLG I RVDTRHEVT AVFAADAMAR LSGTVGVAHV TAGPGLTNTV TAVKNAQMAQ SPILLGGAA STLLQNRGAL QAVDQLSLFR PPGCGQHPHW EDGLPRWLHC CIGPCGSGRL AAFLPLDCVQ LVWSLIACP GPIP
Characteristics:	Human ILVBL full-length ORF (AAH00109, 1 a.a. - 224 a.a.) recombinant protein with GST-tag at N-terminal.
Purification:	in vitro wheat germ expression system

Target Details

Target:	ILVBL
---------	-------

Target Details

Alternative Name:	ILVBL (ILVBL Products)
Background:	Full Gene Name: ilvB (bacterial acetolactate synthase)-like Synonyms: 209L8,AHAS,FLJ39061,ILV2H,MGC1269,MGC19535
Gene ID:	10994

Application Details

Application Notes:	Optimal working dilution should be determined by the investigator.
Comment:	Preparation method: in vitro, wheat germ expression system Product Quality tested by: 12.5% SDS-PAGE Stained with Coomassie Blue.
Restrictions:	For Research Use only

Handling

Buffer:	50 mM Tris-HCl, 10 mM reduced Glutathione, pH =8.0 in the elution buffer.
Handling Advice:	Aliquot to avoid repeated freezing and thawing.
Storage:	-80 °C
Storage Comment:	Best use within three months from the date of receipt of this protein.

Images

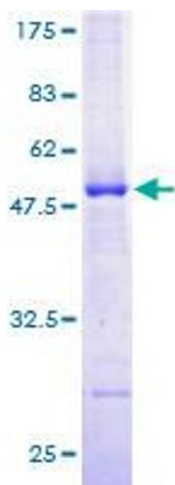


Image 1.