



[Go to Product page](#)

Datasheet for ABIN1307901

PATJ Protein (AA 545-651) (GST tag)

1 Image

Overview

Quantity:	10 µg
Target:	PATJ (INADL)
Protein Characteristics:	AA 545-651
Origin:	Human
Source:	Wheat germ
Protein Type:	Recombinant
Purification tag / Conjugate:	This PATJ protein is labelled with GST tag.
Application:	Affinity Purification (AP), Antibody Array (AA), ELISA, Western Blotting (WB)

Product Details

Purpose:	INADL (Human) Recombinant Protein (Q01)
Sequence:	TLDTQIADDA ELQKYSKLLP IHTLRLGVEV DSFDGHHYIS SIVSGGPVDT LGLLQPEDEL LEVNGMQLYG KSRREAVSFL KEVPPPFTLV CCRRLFDEEA SVDEPRR
Characteristics:	Human INADL partial ORF (NP_733750, 545 a.a. - 651 a.a.) recombinant protein with GST-tag at N-terminal.
Purification:	in vitro wheat germ expression system

Target Details

Target:	PATJ (INADL)
Alternative Name:	INADL (INADL Products)

Target Details

Background:	Full Gene Name: InaD-like (Drosophila) Synonyms: Cipp,FLJ26982,InaD-like,PATJ
Gene ID:	10207
NCBI Accession:	NM_170605

Application Details

Application Notes:	Optimal working dilution should be determined by the investigator.
Comment:	Preparation method: in vitro, wheat germ expression system Product Quality tested by: 12.5% SDS-PAGE Stained with Coomassie Blue.
Restrictions:	For Research Use only

Handling

Buffer:	50 mM Tris-HCl, 10 mM reduced Glutathione, pH =8.0 in the elution buffer.
Handling Advice:	Aliquot to avoid repeated freezing and thawing.
Storage:	-80 °C
Storage Comment:	Best use within three months from the date of receipt of this protein.

Images

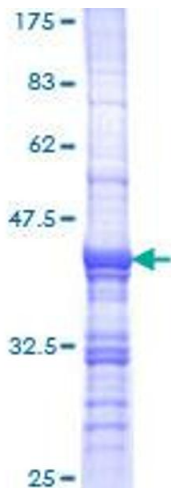


Image 1.