

Datasheet for ABIN1307909  
**ING1 Protein (AA 41-140) (GST tag)**



[Go to Product page](#)

1 Image

Overview

Quantity:	10 µg
Target:	ING1
Protein Characteristics:	AA 41-140
Origin:	Human
Source:	Wheat germ
Protein Type:	Recombinant
Purification tag / Conjugate:	This ING1 protein is labelled with GST tag.
Application:	Western Blotting (WB), ELISA, Affinity Purification (AP), Antibody Array (AA)

Product Details

Purpose:	ING1 (Human) Recombinant Protein (Q01)
Sequence:	DAKYQEILKE LDECYERFSR ETDGAQKRRM LHCVQRALIR SQELGDEKIQ IVSQMVOLVE NRTRQVDSHV ELFEAQQELG DTAGNSGKAG ADRPKGEAAA
Characteristics:	Human ING1 partial ORF ( NP_937862.1, 41 a.a. - 140 a.a.) recombinant protein with GST-tag at N-terminal.
Purification:	in vitro wheat germ expression system

Target Details

Target:	ING1
Alternative Name:	ING1 ( <a href="#">ING1 Products</a> )

## Target Details

Background:	Full Gene Name: inhibitor of growth family, member 1 Synonyms: p24ING1c,p33,p33ING1,p33ING1b,p47,p47ING1a
Gene ID:	3621
NCBI Accession:	<a href="#">NM_198219</a>
Pathways:	<a href="#">Protein targeting to Nucleus, Autophagy</a>

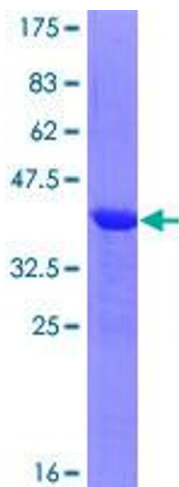
## Application Details

Application Notes:	Optimal working dilution should be determined by the investigator.
Comment:	Preparation method: in vitro, wheat germ expression system Product Quality tested by: 12.5% SDS-PAGE Stained with Coomassie Blue.
Restrictions:	For Research Use only

## Handling

Buffer:	50 mM Tris-HCl, 10 mM reduced Glutathione, pH =8.0 in the elution buffer.
Handling Advice:	Aliquot to avoid repeated freezing and thawing.
Storage:	-80 °C
Storage Comment:	Best use within three months from the date of receipt of this protein.

## Images



**Image 1.**