

Datasheet for ABIN1307951

INPP5A Protein (AA 1-412) (GST tag)



[Go to Product page](#)

1 Image

Overview

Quantity:	10 µg
Target:	INPP5A
Protein Characteristics:	AA 1-412
Origin:	Human
Source:	Wheat germ
Protein Type:	Recombinant
Purification tag / Conjugate:	This INPP5A protein is labelled with GST tag.
Application:	ELISA, Western Blotting (WB), Affinity Purification (AP), Antibody Array (AA)

Product Details

Purpose:	INPP5A (Human) Recombinant Protein (P01)
Sequence:	MAGKAAAPGT AVLLVTANVG SLFDDPENLQ KNWLREFYQV VHTHKPHFMA LHCQEFGGKN YEASMSHVDK FVKELLSSDA MKEYNRARVY LDENYKSQEH FTALGSFYFL HESLKNIYQF DFKAKKYRKV AGKEIYSDL ESTPMLLEKEK FPQDYFPECK WSRKGFIRTR WCIADCAFDL VNIHLFHDAS NLVAWETSPS VYSGIRHKAL GYVLDRIIDQ RFEKVSYFVF GDFNFRLDSK SVVETLCTKA TMQTVRAADT NEVKLIFRE SDNDRKVMLQ LEKKLFDYFN QEVFRDNNGT ALLEFDKELS VFKDRLYELD ISFPPSYYPYS EDARQGEQYM NTRCPAWCDR ILMSPSAKEL VLRSESEEKV VTYDHIGPNV CMGDHKPVFL AFRIMPGAGK PHAHVHKCCV VQ
Characteristics:	Human INPP5A full-length ORF (NP_005530.3, 1 a.a. - 412 a.a.) recombinant protein with GST-tag at N-terminal.
Purification:	in vitro wheat germ expression system

Target Details

Target:	INPP5A
Alternative Name:	INPP5A (INPP5A Products)
Background:	Full Gene Name: inositol polyphosphate-5-phosphatase, 40 kDa Synonyms: 5PTASE,DKFZp434A1721,MGC116947,MGC116949
Gene ID:	3632
NCBI Accession:	NM_005539

Application Details

Application Notes:	Optimal working dilution should be determined by the investigator.
Comment:	Preparation method: in vitro, wheat germ expression system Product Quality tested by: 12.5% SDS-PAGE Stained with Coomassie Blue.
Restrictions:	For Research Use only

Handling

Buffer:	50 mM Tris-HCl, 10 mM reduced Glutathione, pH =8.0 in the elution buffer.
Handling Advice:	Aliquot to avoid repeated freezing and thawing.
Storage:	-80 °C
Storage Comment:	Best use within three months from the date of receipt of this protein.

Images

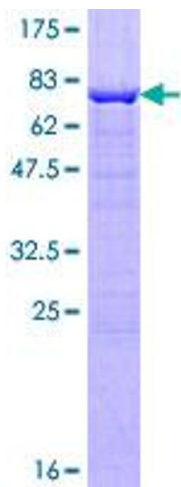


Image 1.