



[Go to Product page](#)

Datasheet for ABIN1307969  
**Insulin Protein (INS) (AA 1-110) (GST tag)**

1 Image

Overview

Quantity:	10 µg
Target:	Insulin (INS)
Protein Characteristics:	AA 1-110
Origin:	Human
Source:	Wheat germ
Protein Type:	Recombinant
Purification tag / Conjugate:	This Insulin protein is labelled with GST tag.
Application:	Western Blotting (WB), ELISA, Affinity Purification (AP), Antibody Array (AA)

Product Details

Purpose:	INS (Human) Recombinant Protein (P01)
Sequence:	MALWMRLLPL LALLALWGPD PAAAFVNQHL CGSHLVEALY LVCGERGFFY TPKTRREAED LQVGQVELGG GPGAGSLQPL ALEGLSQKRG IVEQCCTSIC SLYQLENYCN
Characteristics:	Human INS full-length ORF ( AAH05255.1, 1 a.a. - 110 a.a.) recombinant protein with GST-tag at N-terminal.
Purification:	in vitro wheat germ expression system

Target Details

Target:	Insulin (INS)
Alternative Name:	INS ( <a href="#">INS Products</a> )

## Target Details

Background:	Full Gene Name: insulin Synonyms: ILPR,IRDN
Gene ID:	3630
Pathways:	<a href="#">NF-kappaB Signaling</a> , <a href="#">RTK Signaling</a> , <a href="#">Positive Regulation of Peptide Hormone Secretion</a> , <a href="#">Peptide Hormone Metabolism</a> , <a href="#">Hormone Activity</a> , <a href="#">Carbohydrate Homeostasis</a> , <a href="#">ER-Nucleus Signaling</a> , <a href="#">Regulation of Carbohydrate Metabolic Process</a> , <a href="#">Feeding Behaviour</a> , <a href="#">Autophagy</a> , <a href="#">Negative Regulation of intrinsic apoptotic Signaling</a> , <a href="#">Brown Fat Cell Differentiation</a> , <a href="#">Positive Regulation of fat Cell Differentiation</a>

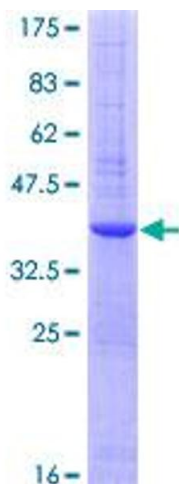
## Application Details

Application Notes:	Optimal working dilution should be determined by the investigator.
Comment:	Preparation method: in vitro, wheat germ expression system Product Quality tested by: 12.5% SDS-PAGE Stained with Coomassie Blue.
Restrictions:	For Research Use only

## Handling

Buffer:	50 mM Tris-HCl, 10 mM reduced Glutathione, pH =8.0 in the elution buffer.
Handling Advice:	Aliquot to avoid repeated freezing and thawing.
Storage:	-80 °C
Storage Comment:	Best use within three months from the date of receipt of this protein.

## Images



**Image 1.**