



[Go to Product page](#)

Datasheet for ABIN1308017

IPO7 Protein (AA 950-1038) (GST tag)

1 Image

Overview

Quantity:	10 µg
Target:	IPO7
Protein Characteristics:	AA 950-1038
Origin:	Human
Source:	Wheat germ
Protein Type:	Recombinant
Purification tag / Conjugate:	This IPO7 protein is labelled with GST tag.
Application:	Western Blotting (WB), ELISA, Affinity Purification (AP), Antibody Array (AA)

Product Details

Purpose:	IPO7 (Human) Recombinant Protein (Q01)
Sequence:	DDEDNPVDEY QIFKAIFQTI QNRNPVWYQA LTHGLNEEQR KQLQDIATLA DQRRAAHESK MIEKHGGYKF SAPVVPSSFN FGGPAPGMN
Characteristics:	Human IPO7 partial ORF (NP_006382.1, 950 a.a. - 1038 a.a.) recombinant protein with GST-tag at N-terminal.
Purification:	in vitro wheat germ expression system

Target Details

Target:	IPO7
Alternative Name:	IPO7 (IPO7 Products)

Target Details

Background:	Full Gene Name: importin 7 Synonyms: FLJ14581,Imp7,MGC138673,RANBP7
Gene ID:	10527
NCBI Accession:	NM_006391
Pathways:	Protein targeting to Nucleus

Application Details

Application Notes:	Optimal working dilution should be determined by the investigator.
Comment:	Preparation method: in vitro, wheat germ expression system Product Quality tested by: 12.5% SDS-PAGE Stained with Coomassie Blue.
Restrictions:	For Research Use only

Handling

Buffer:	50 mM Tris-HCl, 10 mM reduced Glutathione, pH =8.0 in the elution buffer.
Handling Advice:	Aliquot to avoid repeated freezing and thawing.
Storage:	-80 °C
Storage Comment:	Best use within three months from the date of receipt of this protein.

Images

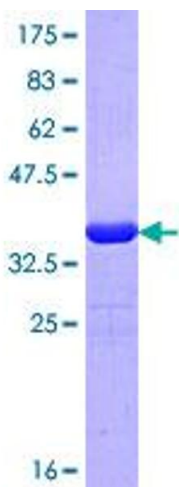


Image 1.