



[Go to Product page](#)

Datasheet for ABIN1308031

IQCC Protein (AA 1-466) (GST tag)

1 Image

Overview

Quantity:	25 µg
Target:	IQCC
Protein Characteristics:	AA 1-466
Origin:	Human
Source:	Wheat germ
Protein Type:	Recombinant
Purification tag / Conjugate:	This IQCC protein is labelled with GST tag.
Application:	ELISA, Western Blotting (WB), Affinity Purification (AP), Antibody Array (AA)

Product Details

Purpose:	IQCC (Human) Recombinant Protein (P01)
Sequence:	MEPELLVRKV SALQACVRGF LVRQFQSLR AEYEAIVREV EGDGLTLQWT EGRIIPRPRFL PEKAKSHQTW KAGDRVANPE QGLWNHFPCE ESEGEATWEE MVLKKSCESS ANQGSLCDRH SSWLQMKQNR KPSQEKTRDT TRMENPEATD QRLPHSQPQL QELQYHRSHL AMELLWLQQA INSRKEYLLL KQTLRSPEAG PIREEPRVFL EHGEQACERD QSQPSAPLED QSYRDRTTGE LEQEDDSCHR VKSPHRSPGS LATTQKNIAG AKCREPCYSK SGPPSSIPSN SQALGDRLTK GPDDGRQTFG GTCLLQMKIL EDQTPRGLKP RNHCPRKSRT QLSALYEDSN IKEMSPRKLD HKEPDCRTVR TQELGLSEDH IIWDGTLGGP EHSVLDLWRT KPPKGQAPT DSSRDGTSNE PSHEGQKKQR TIPWRKSPE ILSSTKAGCT GEEQWRGRP W KTEPPG
Characteristics:	Human IQCC full-length ORF (AAH98317.1, 1 a.a. - 466 a.a.) recombinant protein with GST-tag at N-terminal.

Product Details

Purification: in vitro wheat germ expression system

Target Details

Target: IQCC

Alternative Name: IQCC ([IQCC Products](#))

Background: Full Gene Name: IQ motif containing C
Synonyms: FLJ10547,MGC120341,RP4-622L5.6

Gene ID: 55721

Application Details

Application Notes: Optimal working dilution should be determined by the investigator.

Comment: Preparation method: in vitro, wheat germ expression system
Product Quality tested by: 12.5% SDS-PAGE Stained with Coomassie Blue.

Restrictions: For Research Use only

Handling

Buffer: 50 mM Tris-HCl, 10 mM reduced Glutathione, pH =8.0 in the elution buffer.

Handling Advice: Aliquot to avoid repeated freezing and thawing.

Storage: -80 °C

Storage Comment: Best use within three months from the date of receipt of this protein.

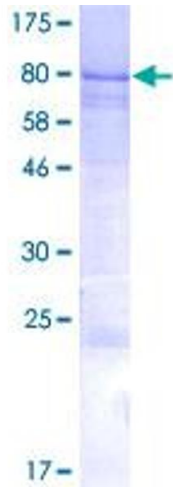


Image 1.