



[Go to Product page](#)

Datasheet for ABIN1308032
IQCD Protein (AA 1-347) (GST tag)

1 Image

Overview

Quantity:	10 µg
Target:	IQCD
Protein Characteristics:	AA 1-347
Origin:	Human
Source:	Wheat germ
Protein Type:	Recombinant
Purification tag / Conjugate:	This IQCD protein is labelled with GST tag.
Application:	ELISA, Western Blotting (WB), Affinity Purification (AP), Antibody Array (AA)

Product Details

Purpose:	IQCD (Human) Recombinant Protein (P01)
Sequence:	MALDILAMAP LYQAPAINRI GPKTDPSKRP ADPLKPLVLS RTKLTIEAK RIMSILDEAI YKVELVTLIS YVASNREDME GMLGEDVMRA VREHEDLCQV LLENVRCLKE KERQLQEQKE AEEEGWLRDR LLSIELQKSS LSPLMQQIKD STKNVLRLLL SNPQAARLLQ MQTQGRSAEA QNFIDSLIEL RGFLFEKLLT SPMEARDKAQ FLQDISRQNS NNQQIIDTLE KELAERMKNR NAEELEDLD AVHREEKISL EELRRRHKVL VGEFAQIREE REINSKKRME AEQEMVRMVR AATLIQALWK GYLVRSLIRS KKKRGKGGKAK DKEKGGKQGGK EKGKGGK
Characteristics:	Human IQCD full-length ORF (NP_612460.1, 1 a.a. - 347 a.a.) recombinant protein with GST-tag at N-terminal.
Purification:	in vitro wheat germ expression system

Target Details

Target:	IQCD
Alternative Name:	IQCD (IQCD Products)
Background:	Full Gene Name: IQ motif containing D Synonyms: 4933433C09Rik
Gene ID:	115811
NCBI Accession:	NM_138451

Application Details

Application Notes:	Optimal working dilution should be determined by the investigator.
Comment:	Preparation method: in vitro, wheat germ expression system Product Quality tested by: 12.5% SDS-PAGE Stained with Coomassie Blue.
Restrictions:	For Research Use only

Handling

Buffer:	50 mM Tris-HCl, 10 mM reduced Glutathione, pH =8.0 in the elution buffer.
Handling Advice:	Aliquot to avoid repeated freezing and thawing.
Storage:	-80 °C
Storage Comment:	Best use within three months from the date of receipt of this protein.

Images

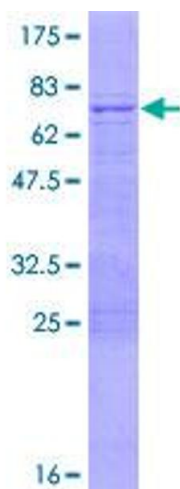


Image 1.