



Datasheet for ABIN1308084
IRF3 Protein (AA 1-427) (GST tag)



[Go to Product page](#)

1 Image

Overview

Quantity:	10 µg
Target:	IRF3
Protein Characteristics:	AA 1-427
Origin:	Human
Source:	Wheat germ
Protein Type:	Recombinant
Purification tag / Conjugate:	This IRF3 protein is labelled with GST tag.
Application:	Western Blotting (WB), ELISA, Affinity Purification (AP), Antibody Array (AA)

Product Details

Purpose:	IRF3 (Human) Recombinant Protein (P02)
Sequence:	MGTPKPRILP WLVSQDLGQ LEGVAWVNKS RTRFRIPWKH GLRQDAQQED FGIFQAWAEA TGAYVPGRDK PDLPTWKRFN RSALNRKEGL RLAEDRSKDP HDPHKIYEFV NSGVGDFSQP DTSPDTNGGG STSDTQEDIL DELLGNMFLA PLPDPGPPSL AVAPEPCPQP LRSPSLDNPT PFPNLGPMEN PLKRLVLPGE EWEFEVTAFY RGRQVFQQT I SCPEGLRLVG SEVGDRTLPG WPVTLDPDGM SLDRGVMSY VRHVLSCGG GLALWRAGQW LWAQRLGHCH TYWAVSEELL PNSGHGPDGE VPKDKEGGVF DLGPFIVDLI TFTEGSGRSP RYALWFCVGE SWPQDQPWTK RLVMVKVPT CLRALVEMAR VGGASSENT VDLHISNSHP LSLTSDQYKA YLQDLVEGMD FQGPGES
Characteristics:	Human IRF3 full-length ORF (NP_001562.1, 1 a.a. - 427 a.a.) recombinant protein with GST-tag at N-terminal.

Product Details

Purification: in vitro wheat germ expression system

Target Details

Target: IRF3

Alternative Name: IRF3 ([IRF3 Products](#))

Background: Full Gene Name: interferon regulatory factor 3
Synonyms:

Gene ID: 3661

NCBI Accession: [NM_001571](#)

Pathways: [TLR Signaling](#), [Activation of Innate immune Response](#), [Cellular Response to Molecule of Bacterial Origin](#), [Hepatitis C](#), [Toll-Like Receptors Cascades](#)

Application Details

Application Notes: Optimal working dilution should be determined by the investigator.

Comment: Preparation method: in vitro, wheat germ expression system
Product Quality tested by: 12.5% SDS-PAGE Stained with Coomassie Blue.

Restrictions: For Research Use only

Handling

Buffer: 50 mM Tris-HCl, 10 mM reduced Glutathione, pH =8.0 in the elution buffer.

Handling Advice: Aliquot to avoid repeated freezing and thawing.

Storage: -80 °C

Storage Comment: Best use within three months from the date of receipt of this protein.

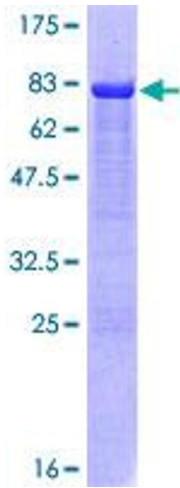


Image 1.