

Datasheet for ABIN1308096
IRF6 Protein (AA 368-467) (GST tag)



[Go to Product page](#)

1 Image

Overview

Quantity:	10 µg
Target:	IRF6
Protein Characteristics:	AA 368-467
Origin:	Human
Source:	Wheat germ
Protein Type:	Recombinant
Purification tag / Conjugate:	This IRF6 protein is labelled with GST tag.
Application:	Western Blotting (WB), ELISA, Affinity Purification (AP), Antibody Array (AA)

Product Details

Purpose:	IRF6 (Human) Recombinant Protein (Q01)
Sequence:	PFEIYLCFGE EWPDGKPLER KLILVQVIPV VARMIYEMFS GDFTRSFDSG SVRLQISTPD IKDNIVAQLK QLYRILQTQE SWQPMQPTPS MQLPPALPPQ
Characteristics:	Human IRF6 partial ORF (NP_006138, 368 a.a. - 467 a.a.) recombinant protein with GST-tag at N-terminal.
Purification:	in vitro wheat germ expression system

Target Details

Target:	IRF6
Alternative Name:	IRF6 (IRF6 Products)

Target Details

Background: Full Gene Name: interferon regulatory factor 6
Synonyms: LPS,OFC6,PIT,PPS,VWS

Gene ID: 3664

NCBI Accession: [NM_006147](#)

Application Details

Application Notes: Optimal working dilution should be determined by the investigator.

Comment: Preparation method: in vitro, wheat germ expression system
Product Quality tested by: 12.5% SDS-PAGE Stained with Coomassie Blue.

Restrictions: For Research Use only

Handling

Buffer: 50 mM Tris-HCl, 10 mM reduced Glutathione, pH =8.0 in the elution buffer.

Handling Advice: Aliquot to avoid repeated freezing and thawing.

Storage: -80 °C

Storage Comment: Best use within three months from the date of receipt of this protein.

Images

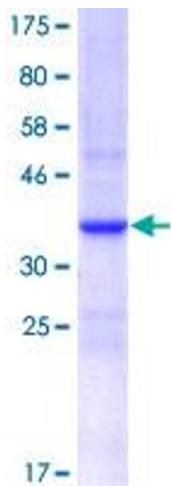


Image 1.