



[Go to Product page](#)

Datasheet for ABIN1308104  
**IRGC Protein (AA 1-463) (GST tag)**

1 Image

Overview

Quantity:	10 µg
Target:	IRGC
Protein Characteristics:	AA 1-463
Origin:	Human
Source:	Wheat germ
Protein Type:	Recombinant
Purification tag / Conjugate:	This IRGC protein is labelled with GST tag.
Application:	ELISA, Western Blotting (WB), Affinity Purification (AP), Antibody Array (AA)

Product Details

Purpose:	IRGC (Human) Recombinant Protein (P01)
Sequence:	MATSKLPVVP GEEENTILMA KERLEALRTA FESGDLPQAA SHLQELLAST ESIRLEVGVT GESGAGKSSL INALRGLEAE DPGAALTGVM ETTMQPSPYP HPQFPDVTW DLPGAGSPGC PADKYLKQVD FSRDYDFLLV SPRRCGAVET RLAAEILCQG KKFYFVRTKV DEDLAATRTQ RPSGFREAAV LQEIRDHCAE RLREAGVADP RIFLVSNLSP ARYDFPTLVS TWEHDLPSHR RHAGLLSLPD ISLEALQKKK AMLQEQLKT ALVLGVIQAL PVPGLAAAYD DALLIHSLRG YHRSFGLDDD SLAKLAEQVG KQAGDLRSVI RSPLANEVSP ETVLRLYSQS SDGAMRVARA FERGIPVFGT LVAGGISFGA VYTMLQGCLN EMAEDAQRVR IKALEDDEPQ PEVSLEVASD NGVEKGGSGE GGGEEAPLST CRKLGLLLKY ILDSWKKHDS EEK
Characteristics:	Human IRGC full-length ORF ( NP_062558.1, 1 a.a. - 463 a.a.) recombinant protein with GST-tag at N-terminal.

## Product Details

---

Purification: in vitro wheat germ expression system

## Target Details

---

Target: IRGC

Alternative Name: IRGC ([IRGC Products](#))

Background: Full Gene Name: immunity-related GTPase family, cinema  
Synonyms: CINEMA,IRGC1,ligp5,R30953\_1

Gene ID: 56269

NCBI Accession: [NM\\_019612](#)

## Application Details

---

Application Notes: Optimal working dilution should be determined by the investigator.

Comment: Preparation method: in vitro, wheat germ expression system  
Product Quality tested by: 12.5% SDS-PAGE Stained with Coomassie Blue.

Restrictions: For Research Use only

## Handling

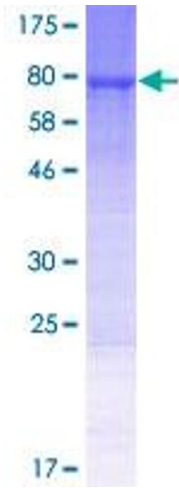
---

Buffer: 50 mM Tris-HCl, 10 mM reduced Glutathione, pH =8.0 in the elution buffer.

Handling Advice: Aliquot to avoid repeated freezing and thawing.

Storage: -80 °C

Storage Comment: Best use within three months from the date of receipt of this protein.



**Image 1.**