



[Go to Product page](#)

Datasheet for ABIN1308122

## IRX6 Protein (AA 1-446) (GST tag)

### 1 Image

#### Overview

Quantity:	25 µg
Target:	IRX6
Protein Characteristics:	AA 1-446
Origin:	Human
Source:	Wheat germ
Protein Type:	Recombinant
Purification tag / Conjugate:	This IRX6 protein is labelled with GST tag.
Application:	ELISA, Western Blotting (WB), Affinity Purification (AP), Antibody Array (AA)

#### Product Details

Purpose:	IRX6 (Human) Recombinant Protein (P01)
Sequence:	MSFPHFGHPY RGASQFLASA SSSTTCCEST QRSVSDVASG STPAPALCCA PYDSRLLGSA RPELGAALGI YGAPYAAAAA AQSYPGYLPY SPEPPSLYGA LNPQYEFKEA AGSFTSSLAQ PGAYYPYERT LGQYQYERYG AVELSGAGRR KNATRETTST LKAWLNEHRK NPYPTKGEKI MLAIITKMTL TQVSTWFANA RRRLKKNENKM TWAPKNKGGE ERKAEGGEED SLGCLTADTK EVTASQEARGLRLSDLEDLE EEEEEEEAE DEEVVATAGD RLTEFRKGAQ SLPGPCAAAR EGRLERRECG LAAPRFSFND PSGSEADFL SAETGSPRLT MHYPCLEKPR IWSLAHTATA SAVEGAPPAR PRPRSPECRM IPGQPASAR RLSVPRDSAC DESSCIPKAF GNPKFALQGL PLNCAPCPRR SEPVVQCQYP SGAEAG
Characteristics:	Human IRX6 full-length ORF ( NP_077311.2, 1 a.a. - 446 a.a.) recombinant protein with GST-tag at N-terminal.

## Product Details

---

Purification: in vitro wheat germ expression system

## Target Details

---

Target: IRX6

Alternative Name: IRX6 ([IRX6 Products](#))

Background: Full Gene Name: iroquois homeobox 6  
Synonyms: IRX-3,IRX7,IRXB3

Gene ID: 79190

NCBI Accession: [NM\\_024335](#)

## Application Details

---

Application Notes: Optimal working dilution should be determined by the investigator.

Comment: Preparation method: in vitro, wheat germ expression system  
Product Quality tested by: 12.5% SDS-PAGE Stained with Coomassie Blue.

Restrictions: For Research Use only

## Handling

---

Buffer: 50 mM Tris-HCl, 10 mM reduced Glutathione, pH =8.0 in the elution buffer.

Handling Advice: Aliquot to avoid repeated freezing and thawing.

Storage: -80 °C

Storage Comment: Best use within three months from the date of receipt of this protein.

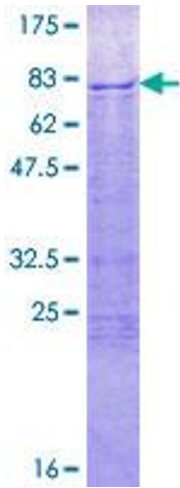


Image 1.