



[Go to Product page](#)

Datasheet for ABIN1308123

IRX6 Protein (AA 337-446) (GST tag)

1 Image

Overview

Quantity:	10 µg
Target:	IRX6
Protein Characteristics:	AA 337-446
Origin:	Human
Source:	Wheat germ
Protein Type:	Recombinant
Purification tag / Conjugate:	This IRX6 protein is labelled with GST tag.
Application:	ELISA, Western Blotting (WB), Affinity Purification (AP), Antibody Array (AA)

Product Details

Purpose:	IRX6 (Human) Recombinant Protein (Q01)
Sequence:	PRLTMHYPCL EKPRIWSLAH TATASAVEGA PPARPRPRSP ECRMIPGQPP ASARRLSVPR DSACDESSCI PKAFGNPKFA LQGLPLNCAP CPRRSEPVVQ CQYPSGAEAG
Characteristics:	Human IRX6 partial ORF (NP_077311, 337 a.a. - 446 a.a.) recombinant protein with GST-tag at N-terminal.
Purification:	in vitro wheat germ expression system

Target Details

Target:	IRX6
Alternative Name:	IRX6 (IRX6 Products)

Target Details

Background: Full Gene Name: iroquois homeobox 6
Synonyms: IRX-3,IRX7,IRXB3

Gene ID: 79190

NCBI Accession: [NM_024335](#)

Application Details

Application Notes: Optimal working dilution should be determined by the investigator.

Comment: Preparation method: in vitro, wheat germ expression system
Product Quality tested by: 12.5% SDS-PAGE Stained with Coomassie Blue

Restrictions: For Research Use only

Handling

Buffer: 50 mM Tris-HCl, 10 mM reduced Glutathione, pH =8.0 in the elution buffer.

Handling Advice: Aliquot to avoid repeated freezing and thawing.

Storage: -80 °C

Storage Comment: Best use within three months from the date of receipt of this protein.

Images

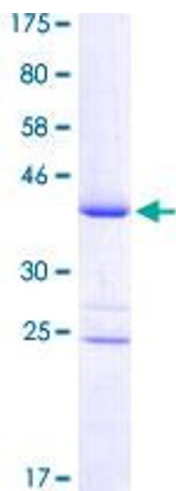


Image 1.