



[Go to Product page](#)

Datasheet for ABIN1308141

ISL2 Protein (AA 261-358) (GST tag)

1 Image

Overview

Quantity:	10 µg
Target:	ISL2
Protein Characteristics:	AA 261-358
Origin:	Human
Source:	Wheat germ
Protein Type:	Recombinant
Purification tag / Conjugate:	This ISL2 protein is labelled with GST tag.
Application:	ELISA, Western Blotting (WB), Affinity Purification (AP), Antibody Array (AA)

Product Details

Purpose:	ISL2 (Human) Recombinant Protein (Q01)
Sequence:	HSDKTSLQGL TGTPLVAGSP IRHENAVQGS AVEVQTYQPP WKALSEFALQ SDDLQPAFQQ LVSFSESGSL GNSSGSDVTS LSSQLPDTN SMVPSPVE
Characteristics:	Human ISL2 partial ORF (NP_665804.1, 261 a.a. - 358 a.a.) recombinant protein with GST-tag at N-terminal.
Purification:	in vitro wheat germ expression system

Target Details

Target:	ISL2
Alternative Name:	ISL2 (ISL2 Products)

Target Details

Background: Full Gene Name: ISL LIM homeobox 2
Synonyms: FLJ10160

Gene ID: 64843

NCBI Accession: [NM_145805](#)

Application Details

Application Notes: Optimal working dilution should be determined by the investigator.

Comment: Preparation method: in vitro, wheat germ expression system
Product Quality tested by: 12.5% SDS-PAGE Stained with Coomassie Blue.

Restrictions: For Research Use only

Handling

Buffer: 50 mM Tris-HCl, 10 mM reduced Glutathione, pH =8.0 in the elution buffer.

Handling Advice: Aliquot to avoid repeated freezing and thawing.

Storage: -80 °C

Storage Comment: Best use within three months from the date of receipt of this protein.

Images

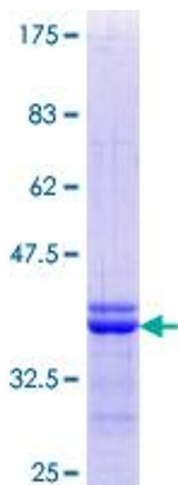


Image 1.