



[Go to Product page](#)

Datasheet for ABIN1308205

Integrin beta 2 Protein (ITGB2) (AA 600-699) (GST tag)

1 Image

Overview

Quantity:	10 µg
Target:	Integrin beta 2 (ITGB2)
Protein Characteristics:	AA 600-699
Origin:	Human
Source:	Wheat germ
Protein Type:	Recombinant
Purification tag / Conjugate:	This Integrin beta 2 protein is labelled with GST tag.
Application:	Western Blotting (WB), ELISA, Affinity Purification (AP), Antibody Array (AA)

Product Details

Purpose:	ITGB2 (Human) Recombinant Protein (Q01)
Sequence:	VCECHSGYQL PLCQECPGCP SPCGKYISCA ECLKFEKGPF GKNCSAACPG LQLSNNPVKG RTCKERDSEG CWVAYTLEQQ DGMDRYLIYV DESRECVAGP
Characteristics:	Human ITGB2 partial ORF (AAH05861, 600 a.a. - 699 a.a.) recombinant protein with GST-tag at N-terminal.
Purification:	in vitro wheat germ expression system

Target Details

Target:	Integrin beta 2 (ITGB2)
Alternative Name:	ITGB2 (ITGB2 Products)

Target Details

Background:	Full Gene Name: integrin, beta 2 (complement component 3 receptor 3 and 4 subunit) Synonyms: CD18,LAD,LCAMB,LFA-1,MAC-1,MF17,MFI7
Gene ID:	3689
Pathways:	NF-kappaB Signaling , Activation of Innate immune Response , Toll-Like Receptors Cascades , Activated T Cell Proliferation

Application Details

Application Notes:	Optimal working dilution should be determined by the investigator.
Comment:	Preparation method: in vitro, wheat germ expression system Product Quality tested by: 12.5% SDS-PAGE Stained with Coomassie Blue.
Restrictions:	For Research Use only

Handling

Buffer:	50 mM Tris-HCl, 10 mM reduced Glutathione, pH =8.0 in the elution buffer.
Handling Advice:	Aliquot to avoid repeated freezing and thawing.
Storage:	-80 °C
Storage Comment:	Best use within three months from the date of receipt of this protein.

Images

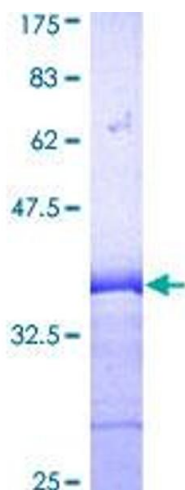


Image 1.