

Datasheet for ABIN1308213

**Integrin beta 4 Protein (ITGB4) (AA 28-137) (GST tag)**[Go to Product page](#)**1** Image

## Overview

Quantity:	10 µg
Target:	Integrin beta 4 (ITGB4)
Protein Characteristics:	AA 28-137
Origin:	Human
Source:	Wheat germ
Protein Type:	Recombinant
Purification tag / Conjugate:	This Integrin beta 4 protein is labelled with GST tag.
Application:	Western Blotting (WB), ELISA, Affinity Purification (AP), Antibody Array (AA)

## Product Details

Purpose:	ITGB4 (Human) Recombinant Protein (Q01)
Sequence:	NRCKKAPVKS CTECVRVDKD CAYCTDEMFR DRRCNTQAEL LAAGCQRESI VMESSFQIT EETQIDTTLR RSQMSPQGLR VRLRPGEERH FELEVFEPL SPVDLYILMD
Characteristics:	Human ITGB4 partial ORF ( NP_000204, 28 a.a. - 137 a.a.) recombinant protein with GST-tag at N-terminal.
Purification:	in vitro wheat germ expression system

## Target Details

Target:	Integrin beta 4 (ITGB4)
Alternative Name:	ITGB4 ( <a href="#">ITGB4 Products</a> )

## Target Details

---

Background: Full Gene Name: integrin, beta 4  
Synonyms: CD104

---

Gene ID: 3691

---

NCBI Accession: [NM\\_000213](#)

---

Pathways: [Integrin Complex](#)

---

## Application Details

---

Application Notes: Optimal working dilution should be determined by the investigator.

---

Comment: Preparation method: in vitro, wheat germ expression system  
Product Quality tested by: 12.5% SDS-PAGE Stained with Coomassie Blue.

---

Restrictions: For Research Use only

---

## Handling

---

Buffer: 50 mM Tris-HCl, 10 mM reduced Glutathione, pH =8.0 in the elution buffer.

---

Handling Advice: Aliquot to avoid repeated freezing and thawing.

---

Storage: -80 °C

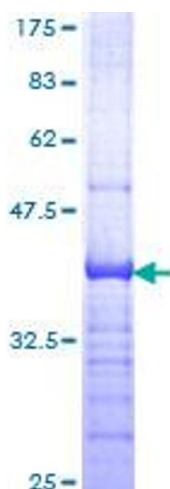
---

Storage Comment: Best use within three months from the date of receipt of this protein.

---

## Images

---



**Image 1.**