



[Go to Product page](#)

Datasheet for ABIN1308221

ITGB6 Protein (AA 604-707) (GST tag)

1 Image

Overview

Quantity:	10 µg
Target:	ITGB6
Protein Characteristics:	AA 604-707
Origin:	Human
Source:	Wheat germ
Protein Type:	Recombinant
Purification tag / Conjugate:	This ITGB6 protein is labelled with GST tag.
Application:	Western Blotting (WB), ELISA, Affinity Purification (AP), Antibody Array (AA)

Product Details

Purpose:	ITGB6 (Human) Recombinant Protein (Q01)
Sequence:	CTNPGASGPT CERCPTCGDP CNSKRSCIEC HLSAAGQARE ECVDKCKLAG ATISEEEDFS KDGSVSCSLQ GENECLITFL ITTDNEGKTI IHSINEKDCP KPPN
Characteristics:	Human ITGB6 partial ORF (NM_000888, 604 a.a. - 707 a.a.) recombinant protein with GST-tag at N-terminal.
Purification:	in vitro wheat germ expression system

Target Details

Target:	ITGB6
Alternative Name:	ITGB6 (ITGB6 Products)

Target Details

Background: Full Gene Name: integrin, beta 6
Synonyms:

Gene ID: 3694

NCBI Accession: [NM_000888](#)

Application Details

Application Notes: Optimal working dilution should be determined by the investigator.

Comment: Preparation method: in vitro, wheat germ expression system
Product Quality tested by: 12.5% SDS-PAGE Stained with Coomassie Blue.

Restrictions: For Research Use only

Handling

Buffer: 50 mM Tris-HCl, 10 mM reduced Glutathione, pH =8.0 in the elution buffer.

Handling Advice: Aliquot to avoid repeated freezing and thawing.

Storage: -80 °C

Storage Comment: Best use within three months from the date of receipt of this protein.

Images

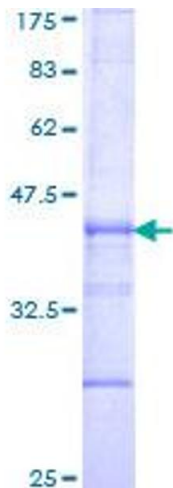


Image 1.