



[Go to Product page](#)

Datasheet for ABIN1308233

## ITK Protein (AA 1-111) (GST tag)

### 1 Image

#### Overview

Quantity:	10 µg
Target:	ITK
Protein Characteristics:	AA 1-111
Origin:	Human
Source:	Wheat germ
Protein Type:	Recombinant
Purification tag / Conjugate:	This ITK protein is labelled with GST tag.
Application:	Western Blotting (WB), ELISA, Affinity Purification (AP), Antibody Array (AA)

#### Product Details

Purpose:	ITK (Human) Recombinant Protein (Q01)
Sequence:	MNNFILLIEEQ LIKKSQKRR TSPSNFKVRF FVLTKASLAY FEDRHGKKRT LKGSIELSRI KCVEIVKSDI SIPCHYKYPF QVVHDNYLLY VFAPDRESRQ RWVLALKEET R
Characteristics:	Human ITK partial ORF ( NP_005537, 1 a.a. - 111 a.a.) recombinant protein with GST-tag at N-terminal.
Purification:	in vitro wheat germ expression system

#### Target Details

Target:	ITK
Alternative Name:	ITK ( <a href="#">ITK Products</a> )

## Target Details

---

Background:	Full Gene Name: IL2-inducible T-cell kinase Synonyms: EMT,LYK,MGC126257,MGC126258,PSCTK2
Gene ID:	3702
NCBI Accession:	<a href="#">NM_005546</a>
Pathways:	<a href="#">TCR Signaling</a> , <a href="#">Fc-epsilon Receptor Signaling Pathway</a>

## Application Details

---

Application Notes:	Optimal working dilution should be determined by the investigator.
Comment:	Preparation method: in vitro, wheat germ expression system Product Quality tested by: 12.5% SDS-PAGE Stained with Coomassie Blue.
Restrictions:	For Research Use only

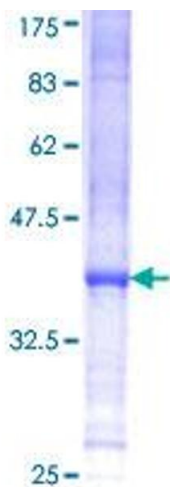
## Handling

---

Buffer:	50 mM Tris-HCl, 10 mM reduced Glutathione, pH =8.0 in the elution buffer.
Handling Advice:	Aliquot to avoid repeated freezing and thawing.
Storage:	-80 °C
Storage Comment:	Best use within three months from the date of receipt of this protein.

## Images

---



**Image 1.**