



[Go to Product page](#)

Datasheet for ABIN1308239

ITM2B Protein (AA 1-266) (GST tag)

1 Image

Overview

Quantity:	10 µg
Target:	ITM2B
Protein Characteristics:	AA 1-266
Origin:	Human
Source:	Wheat germ
Protein Type:	Recombinant
Purification tag / Conjugate:	This ITM2B protein is labelled with GST tag.
Application:	ELISA, Western Blotting (WB), Affinity Purification (AP), Antibody Array (AA)

Product Details

Purpose:	ITM2B (Human) Recombinant Protein (P02)
Sequence:	MVKVTFNSAL AQKEAKKDEP KSGEEALIIP PDAVAVDCKD PDDVVPVGQR RAWCWCMCFG LAFMLAGVIL GGAYLYKYFA LQPDDVYYCG IKYIKDDVIL NEPSADAPAA LYQTIENIK IFEEEEVEFI SVPVPEFADS DPANIVHDFN KKL TAYLDLN LDKCYVIPLN TSIVMPPRNL LELLINIKAG TYLPQSYLIH EHMVITDRIE NIDHLGFFIY RLCHDKETYK LQRRETIKGI QKREASNCFA IRHFENKFAV ETLICS
Characteristics:	Human ITM2B full-length ORF (NP_068839.1, 1 a.a. - 266 a.a.) recombinant protein with GST-tag at N-terminal.
Purification:	in vitro wheat germ expression system

Target Details

Target:	ITM2B
Alternative Name:	ITM2B (ITM2B Products)
Background:	Full Gene Name: integral membrane protein 2B Synonyms: ABRI,BRI,BRI2,BRICD2B,E25B,E3-16,FBD
Gene ID:	9445
NCBI Accession:	NM_021999

Application Details

Application Notes:	Optimal working dilution should be determined by the investigator.
Comment:	Preparation method: in vitro, wheat germ expression system Product Quality tested by: 12.5% SDS-PAGE Stained with Coomassie Blue.
Restrictions:	For Research Use only

Handling

Buffer:	50 mM Tris-HCl, 10 mM reduced Glutathione, pH =8.0 in the elution buffer.
Handling Advice:	Aliquot to avoid repeated freezing and thawing.
Storage:	-80 °C
Storage Comment:	Best use within three months from the date of receipt of this protein.

Images

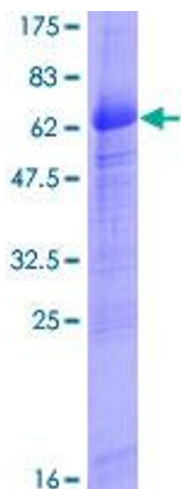


Image 1.