



[Go to Product page](#)

Datasheet for ABIN1308244

## ITPA Protein (AA 89-193) (GST tag)

### 1 Image

#### Overview

Quantity:	10 µg
Target:	ITPA
Protein Characteristics:	AA 89-193
Origin:	Human
Source:	Wheat germ
Protein Type:	Recombinant
Purification tag / Conjugate:	This ITPA protein is labelled with GST tag.
Application:	ELISA, Western Blotting (WB), Affinity Purification (AP), Antibody Array (AA)

#### Product Details

Purpose:	ITPA (Human) Recombinant Protein (Q01)
Sequence:	KWFLEKCLKPE GLHQLLAGFE DKSAYALCTF ALSTGDPSQP VRLFRGRTSG RIVAPRGCQD FGWDPCFQPD GYEQTYAEMP KAEKNAVSHR FRALLELQEY FGSLA
Characteristics:	Human ITPA partial ORF ( NP_258412.1, 89 a.a. - 193 a.a.) recombinant protein with GST-tag at N-terminal.
Purification:	in vitro wheat germ expression system

#### Target Details

Target:	ITPA
Alternative Name:	ITPA ( <a href="#">ITPA Products</a> )

## Target Details

Background:	Full Gene Name: inosine triphosphatase (nucleoside triphosphate pyrophosphatase) Synonyms: C20orf37,HLC14-06-P,ITPase,dJ794I6.3
Gene ID:	3704
NCBI Accession:	<a href="#">NM_033453</a>

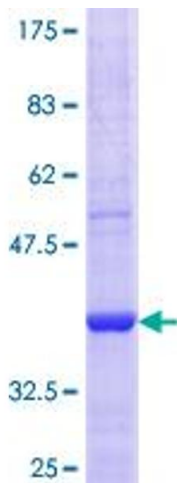
## Application Details

Application Notes:	Optimal working dilution should be determined by the investigator.
Comment:	Preparation method: in vitro, wheat germ expression system Product Quality tested by: 12.5% SDS-PAGE Stained with Coomassie Blue.
Restrictions:	For Research Use only

## Handling

Buffer:	50 mM Tris-HCl, 10 mM reduced Glutathione, pH =8.0 in the elution buffer.
Handling Advice:	Aliquot to avoid repeated freezing and thawing.
Storage:	-80 °C
Storage Comment:	Best use within three months from the date of receipt of this protein.

## Images



**Image 1.**