



[Go to Product page](#)

Datasheet for ABIN1308249

ITPKB Protein (AA 545-643) (GST tag)

1 Image

Overview

Quantity:	10 µg
Target:	ITPKB
Protein Characteristics:	AA 545-643
Origin:	Human
Source:	Wheat germ
Protein Type:	Recombinant
Purification tag / Conjugate:	This ITPKB protein is labelled with GST tag.
Application:	ELISA, Western Blotting (WB), Affinity Purification (AP), Antibody Array (AA)

Product Details

Purpose:	ITPKB (Human) Recombinant Protein (Q01)
Sequence:	PELLPQDQDK PFLRKACSPS NIPAVIITDM GTQEDGALEE TQGSPRGNLP LRKLSSSSAS STGFSSSYED SEEDISSDPE RTLDPNSAFL HTLDQKQPR
Characteristics:	Human ITPKB partial ORF (NP_002212, 545 a.a. - 643 a.a.) recombinant protein with GST-tag at N-terminal.
Purification:	in vitro wheat germ expression system

Target Details

Target:	ITPKB
Alternative Name:	ITPKB (ITPKB Products)

Target Details

Background:	Full Gene Name: inositol 1,4,5-trisphosphate 3-kinase B Synonyms: IP3K,IP3K-B,IP3KB,PIG37
Gene ID:	3707
NCBI Accession:	NM_002221

Application Details

Application Notes:	Optimal working dilution should be determined by the investigator.
Comment:	Preparation method: in vitro, wheat germ expression system Product Quality tested by: 12.5% SDS-PAGE Stained with Coomassie Blue.
Restrictions:	For Research Use only

Handling

Buffer:	50 mM Tris-HCl, 10 mM reduced Glutathione, pH =8.0 in the elution buffer.
Handling Advice:	Aliquot to avoid repeated freezing and thawing.
Storage:	-80 °C
Storage Comment:	Best use within three months from the date of receipt of this protein.

Images

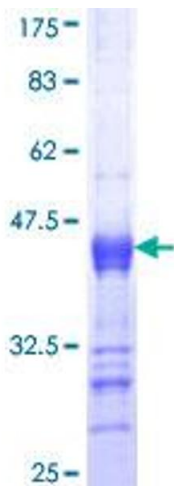


Image 1.