

Datasheet for ABIN1308258  
**ITSN1 Protein (AA 588-675) (GST tag)**



[Go to Product page](#)

1 Image

Overview

Quantity:	10 µg
Target:	ITSN1
Protein Characteristics:	AA 588-675
Origin:	Human
Source:	Wheat germ
Protein Type:	Recombinant
Purification tag / Conjugate:	This ITSN1 protein is labelled with GST tag.
Application:	Western Blotting (WB), ELISA, Affinity Purification (AP), Antibody Array (AA)

Product Details

Purpose:	ITSN1 (Human) Recombinant Protein (Q01)
Sequence:	EVEKETRSKL QEIDIFNNQL KELREIHNKQ QLQKQKSMEA ERLKQKEQER KIIELEKQKE EAQRRAQERD KQWLEHVQQE DEHQRP RK
Characteristics:	Human ITSN1 partial ORF ( NP_003015.2, 588 a.a. - 675 a.a.) recombinant protein with GST-tag at N-terminal.
Purification:	in vitro wheat germ expression system

Target Details

Target:	ITSN1
Alternative Name:	ITSN1 ( <a href="#">ITSN1 Products</a> )

## Target Details

Background:	Full Gene Name: intersectin 1 (SH3 domain protein) Synonyms: ITSN,MGC134948,MGC134949,SH3D1A,SH3P17
Gene ID:	6453
NCBI Accession:	<a href="#">NM_003024</a>
Pathways:	<a href="#">Neurotrophin Signaling Pathway</a>

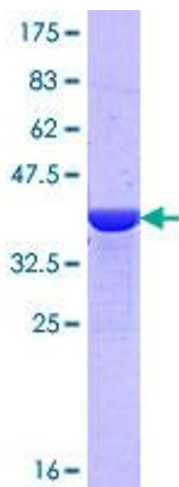
## Application Details

Application Notes:	Optimal working dilution should be determined by the investigator.
Comment:	Preparation method: in vitro, wheat germ expression system Product Quality tested by: 12.5% SDS-PAGE Stained with Coomassie Blue.
Restrictions:	For Research Use only

## Handling

Buffer:	50 mM Tris-HCl, 10 mM reduced Glutathione, pH =8.0 in the elution buffer.
Handling Advice:	Aliquot to avoid repeated freezing and thawing.
Storage:	-80 °C
Storage Comment:	Best use within three months from the date of receipt of this protein.

## Images



**Image 1.**