

Datasheet for ABIN1308260

## Intersectin 2 Protein (ITSN2) (AA 471-571) (GST tag)



[Go to Product page](#)

### 1 Image

#### Overview

Quantity:	10 µg
Target:	Intersectin 2 (ITSN2)
Protein Characteristics:	AA 471-571
Origin:	Human
Source:	Wheat germ
Protein Type:	Recombinant
Purification tag / Conjugate:	This Intersectin 2 protein is labelled with GST tag.
Application:	Western Blotting (WB), Affinity Purification (AP), Antibody Array (AA), ELISA

#### Product Details

Purpose:	ITSN2 (Human) Recombinant Protein (Q01)
Sequence:	NQKNREQEEI VRLNSKKKLN HLELEALNGK HQQISGRLQD VRLKKQTQKT ELEVLDKQCD LEIMEIKQLQ QELQEYQNKI IYLVPEKQLL NERIKNMQFS N
Characteristics:	Human ITSN2 partial ORF ( NP_006268, 471 a.a. - 571 a.a.) recombinant protein with GST-tag at N-terminal.
Purification:	in vitro wheat germ expression system

#### Target Details

Target:	Intersectin 2 (ITSN2)
Alternative Name:	ITSN2 ( <a href="#">ITSN2 Products</a> )

## Target Details

Background:	Full Gene Name: intersectin 2 Synonyms: KIAA1256,PRO2015,SH3D1B,SH3P18,SWA,SWAP
Gene ID:	50618
NCBI Accession:	<a href="#">NM_006277</a>

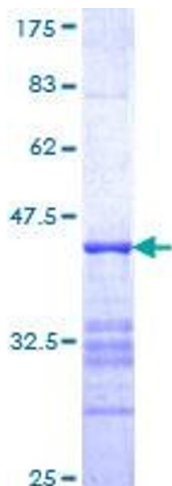
## Application Details

Application Notes:	Optimal working dilution should be determined by the investigator.
Comment:	Preparation method: in vitro, wheat germ expression system Product Quality tested by: 12.5% SDS-PAGE Stained with Coomassie Blue.
Restrictions:	For Research Use only

## Handling

Buffer:	50 mM Tris-HCl, 10 mM reduced Glutathione, pH =8.0 in the elution buffer.
Handling Advice:	Aliquot to avoid repeated freezing and thawing.
Storage:	-80 °C
Storage Comment:	Best use within three months from the date of receipt of this protein.

## Images



**Image 1.**