



[Go to Product page](#)

Datasheet for ABIN1308292

ZG16 Protein (AA 1-167) (GST tag)

1 Image

Overview

Quantity:	25 µg
Target:	ZG16
Protein Characteristics:	AA 1-167
Origin:	Human
Source:	Wheat germ
Protein Type:	Recombinant
Purification tag / Conjugate:	This ZG16 protein is labelled with GST tag.
Application:	ELISA, Western Blotting (WB), Affinity Purification (AP), Antibody Array (AA)

Product Details

Purpose:	ZG16 (Human) Recombinant Protein (P01)
Sequence:	MLTVALLALL CASASGNAIQ ARSSSYSGEY GSGGGKRFSSH SGNQLDGPIT ALRVRVNTYY IVGLQVRYGK VWSDYVGGRN GDLEEIFLHP GESVIQVSGK YKWYLKLVF VTDKGRYLSF GKDSGTSFNA VPLHPNTVLR FISGRSGSLI DAIGLHWDVY PTSCSRC
Characteristics:	Human ZG16 full-length ORF (NP_689551.1, 1 a.a. - 167 a.a.) recombinant protein with GST-tag at N-terminal.
Purification:	in vitro wheat germ expression system

Target Details

Target:	ZG16
Alternative Name:	JCLN (ZG16 Products)

Target Details

Background: Full Gene Name: jacalin-like lectin domain containing
Synonyms: MGC34820,ZG16

Gene ID: 123887

NCBI Accession: [NM_152338](#)

Application Details

Application Notes: Optimal working dilution should be determined by the investigator.

Comment: Preparation method: in vitro, wheat germ expression system
Product Quality tested by: 12.5% SDS-PAGE Stained with Coomassie Blue.

Restrictions: For Research Use only

Handling

Buffer: 50 mM Tris-HCl, 10 mM reduced Glutathione, pH =8.0 in the elution buffer.

Handling Advice: Aliquot to avoid repeated freezing and thawing.

Storage: -80 °C

Storage Comment: Best use within three months from the date of receipt of this protein.

Images

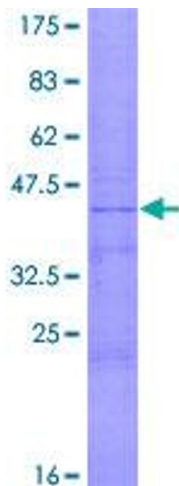


Image 1.