

Datasheet for ABIN1308299

## JMJD1C Protein (AA 2-99) (GST tag)



[Go to Product page](#)

### 1 Image

#### Overview

Quantity:	10 µg
Target:	JMJD1C
Protein Characteristics:	AA 2-99
Origin:	Human
Source:	Wheat germ
Protein Type:	Recombinant
Purification tag / Conjugate:	This JMJD1C protein is labelled with GST tag.
Application:	Affinity Purification (AP), Antibody Array (AA), ELISA, Western Blotting (WB)

#### Product Details

Purpose:	JMJD1C (Human) Recombinant Protein (Q01)
Sequence:	IVMNDQVLEP QNVDPSMVQM TFLDDVVHSL LKGENIGITS RRRSRANQNV NAVHSHYTRA QANSPRPAMN SQAAPVKQNT HQQQQQRSIR PNKRKGSD
Characteristics:	Human JMJD1C partial ORF ( NP_004232, 2 a.a. - 99 a.a.) recombinant protein with GST-tag at N-terminal.
Purification:	in vitro wheat germ expression system

#### Target Details

Target:	JMJD1C
Alternative Name:	JMJD1C ( <a href="#">JMJD1C Products</a> )

## Target Details

Background:	Full Gene Name: jumonji domain containing 1C Synonyms: DKFZp761F0118,FLJ14374,KIAA1380,RP11-10C13.2,TRIP8
Gene ID:	221037
NCBI Accession:	<a href="#">NM_004241</a>
Pathways:	<a href="#">Nuclear Hormone Receptor Binding</a>

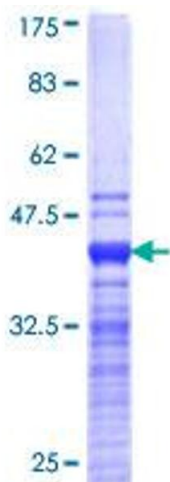
## Application Details

Application Notes:	Optimal working dilution should be determined by the investigator.
Comment:	Preparation method: in vitro, wheat germ expression system Product Quality tested by: 12.5% SDS-PAGE Stained with Coomassie Blue.
Restrictions:	For Research Use only

## Handling

Buffer:	50 mM Tris-HCl, 10 mM reduced Glutathione, pH =8.0 in the elution buffer.
Handling Advice:	Aliquot to avoid repeated freezing and thawing.
Storage:	-80 °C
Storage Comment:	Best use within three months from the date of receipt of this protein.

## Images



**Image 1.**