

Datasheet for ABIN1308308

JMJD7-PLA2G4B Protein (AA 1-316) (GST tag)



[Go to Product page](#)

1 Image

Overview

Quantity:	10 µg
Target:	JMJD7-PLA2G4B
Protein Characteristics:	AA 1-316
Origin:	Human
Source:	Wheat germ
Protein Type:	Recombinant
Purification tag / Conjugate:	This JMJD7-PLA2G4B protein is labelled with GST tag.
Application:	Affinity Purification (AP), Antibody Array (AA), ELISA, Western Blotting (WB)

Product Details

Purpose:	PLA2G4B (Human) Recombinant Protein (P01)
Sequence:	MAEAALEAVR SELREFPAAA RELCVPLAVP YLDKPPTPLH FYRDWVCPNR PCIARNALQH WPALQKWSLP YFRATVGSTE VSVAVTPDGY ADAVRGDRFM MPAERRLPLS FVLVDVLEGRA QHGPVLYVQK QCSNLPSELP QLLPDLESHV PWASEALGKM PDAVNFWLGE AAVTSLHKD HYENLYCVVS GEKHFLFHPP SDRPFIPYEL YTPATYQLTE EGTFKVVDEE AMEKVPWIPL DPLAPDLARY PSYSQAQALR CTVRAGEMLY LPALWFHHVQ QSQGCIAVNF WYDMEYDLKY SYFQLLDSL T KASGLD
Characteristics:	Human PLA2G4B full-length ORF (AAH25290.1, 1 a.a. - 316 a.a.) recombinant protein with GST-tag at N-terminal.
Purification:	in vitro wheat germ expression system

Target Details

Target:	JMJD7-PLA2G4B
Alternative Name:	JMJD7-PLA2G4B (JMJD7-PLA2G4B Products)
Background:	Full Gene Name: JMJD7-PLA2G4B readthrough transcript Synonyms: HsT16992, PLA2G4B, cPLA2-beta
Gene ID:	8681
Pathways:	ER-Nucleus Signaling , VEGF Signaling

Application Details

Application Notes:	Optimal working dilution should be determined by the investigator.
Comment:	Preparation method: in vitro, wheat germ expression system Product Quality tested by: 12.5% SDS-PAGE Stained with Coomassie Blue.
Restrictions:	For Research Use only

Handling

Buffer:	50 mM Tris-HCl, 10 mM reduced Glutathione, pH =8.0 in the elution buffer.
Handling Advice:	Aliquot to avoid repeated freezing and thawing.
Storage:	-80 °C
Storage Comment:	Best use within three months from the date of receipt of this protein.

Images

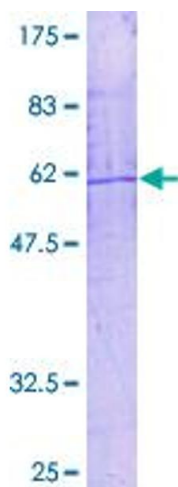


Image 1.