

Datasheet for ABIN1308331

**AJUBA Protein (AA 439-538) (GST tag)**[Go to Product page](#)**1** Image

## Overview

Quantity:	10 µg
Target:	AJUBA
Protein Characteristics:	AA 439-538
Origin:	Human
Source:	Wheat germ
Protein Type:	Recombinant
Purification tag / Conjugate:	This AJUBA protein is labelled with GST tag.
Application:	ELISA, Western Blotting (WB), Affinity Purification (AP), Antibody Array (AA)

## Product Details

Purpose:	JUB (Human) Recombinant Protein (Q01)
Sequence:	IPFTVDFSNQ VYCVTDYHKN YAPKCAACGQ PILPSEGCD IVRVISMDRD YHFECYHCD CRMQLSDEEG CCCFPLDGHL LCHGCHMQRL NARQPPANYI
Characteristics:	Human JUB partial ORF ( NP_116265.1, 439 a.a. - 538 a.a.) recombinant protein with GST-tag at N-terminal.
Purification:	in vitro wheat germ expression system

## Target Details

Target:	AJUBA
Alternative Name:	JUB ( <a href="#">AJUBA Products</a> )

## Target Details

Background:	Full Gene Name: jub, ajuba homolog (Xenopus laevis) Synonyms: Ajuba,MGC15563
Gene ID:	84962
NCBI Accession:	<a href="#">NM_032876</a>
Pathways:	<a href="#">Chromatin Binding</a> , <a href="#">Cell-Cell Junction Organization</a>

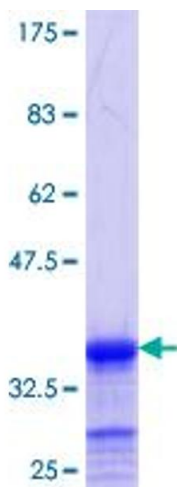
## Application Details

Application Notes:	Optimal working dilution should be determined by the investigator.
Comment:	Preparation method: in vitro, wheat germ expression system Product Quality tested by: 12.5% SDS-PAGE Stained with Coomassie Blue.
Restrictions:	For Research Use only

## Handling

Buffer:	50 mM Tris-HCl, 10 mM reduced Glutathione, pH =8.0 in the elution buffer.
Handling Advice:	Aliquot to avoid repeated freezing and thawing.
Storage:	-80 °C
Storage Comment:	Best use within three months from the date of receipt of this protein.

## Images



**Image 1.**