

Datasheet for ABIN1308344

KAL1 Protein (AA 548-657) (GST tag)

1 Image

1 Publication



[Go to Product page](#)

Overview

Quantity:	10 µg
Target:	KAL1
Protein Characteristics:	AA 548-657
Origin:	Human
Source:	Wheat germ
Protein Type:	Recombinant
Purification tag / Conjugate:	This KAL1 protein is labelled with GST tag.
Application:	Western Blotting (WB), ELISA, Affinity Purification (AP), Antibody Array (AA)

Product Details

Purpose:	KAL1 (Human) Recombinant Protein (Q01)
Sequence:	LAKPENLSAS FIVQDVNITG HFSWKMAKAN LYQPMTGFQV TWA EVT TESR QNSLPNSIIS QSQILPSDHY VLTVPNLRPS TLYRLEVQVL TPGGEGPATI KTFRTPELPP
Characteristics:	Human KAL1 partial ORF (NP_000207, 548 a.a. - 657 a.a.) recombinant protein with GST-tag at N-terminal.
Purification:	in vitro wheat germ expression system

Target Details

Target:	KAL1
Alternative Name:	KAL1 (KAL1 Products)

Target Details

Background: Full Gene Name: Kallmann syndrome 1 sequence
Synonyms: ADMLX,HHA,KAL,KALIG-1,KMS

Gene ID: 3730

NCBI Accession: [NM_000216](#)

Application Details

Application Notes: Optimal working dilution should be determined by the investigator.

Comment: Preparation method: in vitro, wheat germ expression system
Product Quality tested by: 12.5% SDS-PAGE Stained with Coomassie Blue.

Restrictions: For Research Use only

Handling

Buffer: 50 mM Tris-HCl, 10 mM reduced Glutathione, pH =8.0 in the elution buffer.

Handling Advice: Aliquot to avoid repeated freezing and thawing.

Storage: -80 °C

Storage Comment: Best use within three months from the date of receipt of this protein.

Publications

Product cited in: Tenggara, Tominaga, Kamo, Taneda, Negi, Ogawa, Takamori: "Keratinocyte-derived anosmin-1, an extracellular glycoprotein encoded by the X-linked Kallmann syndrome gene, is involved in modulation of epidermal nerve density in atopic dermatitis." in: **Journal of dermatological science**, Vol. 58, Issue 1, pp. 64-71, (2010) ([PubMed](#)).

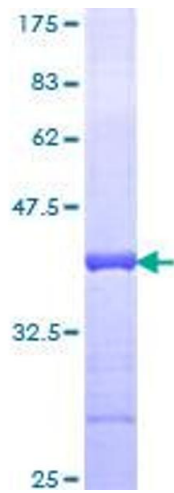


Image 1.