

Datasheet for ABIN1308346  
**KALRN Protein (AA 1187-1287) (GST tag)**



[Go to Product page](#)

1 Image

Overview

Quantity:	10 µg
Target:	KALRN
Protein Characteristics:	AA 1187-1287
Origin:	Human
Source:	Wheat germ
Protein Type:	Recombinant
Purification tag / Conjugate:	This KALRN protein is labelled with GST tag.
Application:	Affinity Purification (AP), Antibody Array (AA), ELISA, Western Blotting (WB)

Product Details

Purpose:	KALRN (Human) Recombinant Protein (Q01)
Sequence:	SKEETCINVC RVDFSPHEY FCGVSNAARD FINVILQEDF RRRPTAATCL QHPWLQPHNG SYSKIPLDTS RLACFIERRK HQNDVRPIPN VKSYIVNRVN Q
Characteristics:	Human KALRN partial ORF ( NP_008995, 1187 a.a. - 1287 a.a.) recombinant protein with GST-tag at N-terminal.
Purification:	in vitro wheat germ expression system

Target Details

Target:	KALRN
Alternative Name:	KALRN ( <a href="#">KALRN Products</a> )

## Target Details

Background: Full Gene Name: kalirin, RhoGEF kinase  
Synonyms: DUET,FLJ16443,HAPIP,TRAD,duo

Gene ID: 8997

NCBI Accession: [NM\\_007064](#)

Pathways: [Neurotrophin Signaling Pathway](#)

## Application Details

Application Notes: Optimal working dilution should be determined by the investigator.

Comment: Preparation method: in vitro, wheat germ expression system  
Product Quality tested by: 12.5% SDS-PAGE Stained with Coomassie Blue.

Restrictions: For Research Use only

## Handling

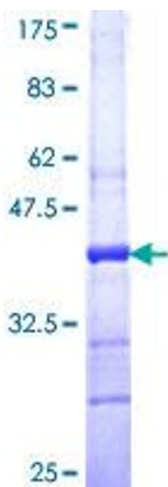
Buffer: 50 mM Tris-HCl, 10 mM reduced Glutathione, pH =8.0 in the elution buffer.

Handling Advice: Aliquot to avoid repeated freezing and thawing.

Storage: -80 °C

Storage Comment: Best use within three months from the date of receipt of this protein.

## Images



**Image 1.**