



[Go to Product page](#)

Datasheet for ABIN1308348

## ANKRD15 Protein (AA 701-800) (GST tag)

### 1 Image

#### Overview

Quantity:	10 µg
Target:	ANKRD15
Protein Characteristics:	AA 701-800
Origin:	Human
Source:	Wheat germ
Protein Type:	Recombinant
Purification tag / Conjugate:	This ANKRD15 protein is labelled with GST tag.
Application:	ELISA, Western Blotting (WB), Affinity Purification (AP), Antibody Array (AA)

#### Product Details

Purpose:	ANKRD15 (Human) Recombinant Protein (Q01)
Sequence:	MGSLNSQLIS TLSSINSVMK SASTEELRNP DFQKTSLGKI TGNLYGYTCK CGGLQSGSPL SSQTSQPEQE VGTSEGKPIS SLDAFPTQEG TLSPVNLTD
Characteristics:	Human ANKRD15 partial ORF ( AAH38116, 701 a.a. - 800 a.a.) recombinant protein with GST-tag at N-terminal.
Purification:	in vitro wheat germ expression system

#### Target Details

Target:	ANKRD15
Alternative Name:	KANK1 ( <a href="#">ANKRD15 Products</a> )

## Target Details

Background:	Full Gene Name: KN motif and ankyrin repeat domains 1 Synonyms: ANKRD15,DKFZp451G231,KANK,KIAA0172,MGC43128
Gene ID:	23189
Pathways:	<a href="#">Regulation of Actin Filament Polymerization</a>

## Application Details

Application Notes:	Optimal working dilution should be determined by the investigator.
Comment:	Preparation method: in vitro, wheat germ expression system Product Quality tested by: 12.5% SDS-PAGE Stained with Coomassie Blue.
Restrictions:	For Research Use only

## Handling

Buffer:	50 mM Tris-HCl, 10 mM reduced Glutathione, pH =8.0 in the elution buffer.
Handling Advice:	Aliquot to avoid repeated freezing and thawing.
Storage:	-80 °C
Storage Comment:	Best use within three months from the date of receipt of this protein.

## Images

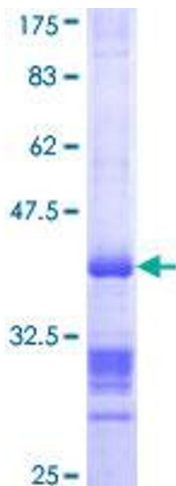


Image 1.