



Datasheet for ABIN1308350
KANK4 Protein (AA 1-995) (GST tag)



[Go to Product page](#)

1 Image

Overview

Quantity:	25 µg
Target:	KANK4
Protein Characteristics:	AA 1-995
Origin:	Human
Source:	Wheat germ
Protein Type:	Recombinant
Purification tag / Conjugate:	This KANK4 protein is labelled with GST tag.
Application:	ELISA, Western Blotting (WB), Affinity Purification (AP), Antibody Array (AA)

Product Details

Purpose:	ANKRD38 (Human) Recombinant Protein (P01)
Sequence:	MEKTDAKDQS SQGDEEKDPP KSHPYSVETP YGFHLDLDFL KYVDDIEKGN TIKRIPIHRR AKQAKFSTLP RNFSLPDSCA RPPAAPPLQN WSPVVPREAS LGTQEQNQSP PLGNAPQAST SRSEVSYHRK ALLAEATRQL EAAEPEDAEL TFGSGRPQLL RASSMPATLL HSRASEEPGL SLGPPAPPAL PPLQGEQSVG DGTFFPAEGL AGFHSSSPRA STRIPELVQE GAEPPEGVVK VPNHLPLPGP PFSFQNVLVV LEDKEDEHNA REAEVLFTPG SPTSPPPPLP SPIPENELL EEIELNISEI PPPPVVEVDM RSIGIRVTEE SLGLARVDPG SISSLKQQVS ALEGELSGRT EELAQVRTAL QQQEEEIKAR EQRIRELEFT VAQLEGQFHQ ENAKDTQGQT DVMVNTDPVH GLLTRESCHK GIEVNLLGSM ESESWGHRGE ENLLWGPDPG HKQGNQSPA RVLPLQLSLP QGPEQVLTSS VHSFLSTELR IEEAGTEQEG GPQGGRGAG GFLWGSRRKT PPAGREETSS NLPGKEHPGR PPSSPTDATI GQYVKKIQEL LQEQWNCLEH GYPELASAIK QPASKLSSIQ SLLSSLNLL LSAYSQAHP PKEPPASSSS PPVEISPSTS LKSIMKKKDY GFRAGGNGTK

Product Details

KNLQFVGVNG GYETTSSEET SGEDSTPEDL SDSEAEKKCD GPDHKHKVDA HLTCEAGQGI
PEGTCHAAQE SGPGEVPHS KAERYKPSEE FLNACRALSQ HLPETGTTTD QLLRQSLNTI
SQEWFVRVSSR KSSSPAVVAS YLHEVQPHSP HFLKLLVNLA DRNGNTALHY SVSHSNFSIA
KLLLETGVCN VDHQNKAGYT AVMITPLASA ETNEDMAVWV KLLREGNVNI QATQGGQTAL
MLGVSHDRED MVQALLSCQA DVNLQDHDGS SALMLACHHG NVDLVRLLLA HPACDSSLTD
KAGRTALSIA LKSPHMEIA GLLRAHAEQG RSLGL

Characteristics: Human ANKRD38 full-length ORF (NP_859063.2, 1 a.a. - 995 a.a.) recombinant protein with GST-tag at N-terminal.

Purification: in vitro wheat germ expression system

Target Details

Target: KANK4

Alternative Name: KANK4 ([KANK4 Products](#))

Background: Full Gene Name: KN motif and ankyrin repeat domains 4
Synonyms: ANKRD38,FLJ10884,KIAA0172,RP5-1155K23.5,dJ1078M7.1

Gene ID: 163782

NCBI Accession: [NM_181712](#)

Application Details

Application Notes: Optimal working dilution should be determined by the investigator.

Comment: Preparation method: in vitro, wheat germ expression system
Product Quality tested by: 12.5% SDS-PAGE Stained with Coomassie Blue.

Restrictions: For Research Use only

Handling

Buffer: 50 mM Tris-HCl, 10 mM reduced Glutathione, pH =8.0 in the elution buffer.

Handling Advice: Aliquot to avoid repeated freezing and thawing.

Storage: -80 °C

Storage Comment: Best use within three months from the date of receipt of this protein.

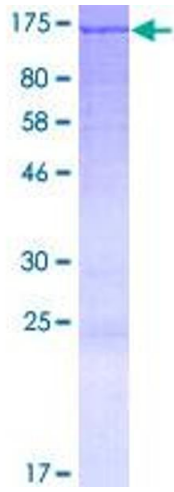


Image 1.