



[Go to Product page](#)

Datasheet for ABIN1308359

## KAT2B Protein (AA 731-832) (GST tag)

### 1 Image

#### Overview

Quantity:	10 µg
Target:	KAT2B
Protein Characteristics:	AA 731-832
Origin:	Human
Source:	Wheat germ
Protein Type:	Recombinant
Purification tag / Conjugate:	This KAT2B protein is labelled with GST tag.
Application:	Western Blotting (WB), ELISA, Affinity Purification (AP), Antibody Array (AA)

#### Product Details

Purpose:	PCAF (Human) Recombinant Protein (Q02)
Sequence:	TLKSILQQVK SHQSAWPFME PVKRTEAPGY YEVIKFPMDL KTMSEKLNK YYVSKKLFMA DLQRVFTNCK EYNPPESEYY KCANILEKFF FSKIKEAGLI DK
Characteristics:	Human PCAF partial ORF ( NP_003875, 731 a.a. - 832 a.a.) recombinant protein with GST-tag at N-terminal.
Purification:	in vitro wheat germ expression system

#### Target Details

Target:	KAT2B
Alternative Name:	KAT2B ( <a href="#">KAT2B Products</a> )

## Target Details

Background:	Full Gene Name: K(lysine) acetyltransferase 2B Synonyms: CAF,P,P/CAF,PCAF
Gene ID:	8850
NCBI Accession:	<a href="#">NM_003884</a>
Pathways:	<a href="#">p53 Signaling</a> , <a href="#">Regulation of Carbohydrate Metabolic Process</a>

## Application Details

Application Notes:	Optimal working dilution should be determined by the investigator.
Comment:	Preparation method: in vitro, wheat germ expression system Product Quality tested by: 12.5% SDS-PAGE Stained with Coomassie Blue.
Restrictions:	For Research Use only

## Handling

Buffer:	50 mM Tris-HCl, 10 mM reduced Glutathione, pH =8.0 in the elution buffer.
Handling Advice:	Aliquot to avoid repeated freezing and thawing.
Storage:	-80 °C
Storage Comment:	Best use within three months from the date of receipt of this protein.

## Images

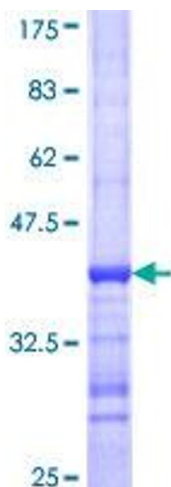


Image 1.