



[Go to Product page](#)

Datasheet for ABIN1308395

## KCNAB3 Protein (AA 1-404) (GST tag)

### 1 Image

#### Overview

Quantity:	25 µg
Target:	KCNAB3
Protein Characteristics:	AA 1-404
Origin:	Human
Source:	Wheat germ
Protein Type:	Recombinant
Purification tag / Conjugate:	This KCNAB3 protein is labelled with GST tag.
Application:	ELISA, Western Blotting (WB), Affinity Purification (AP), Antibody Array (AA)

#### Product Details

Purpose:	KCNAB3 (Human) Recombinant Protein (P01)
Sequence:	<p>MQVSIACTEQ NLRSRSSedr LCGPRPGPGG GNGGPAGGGH GNPPGGGGSG PKARAALVPR PPAPAGALRE STGRGTGMKY RNLGKSGLRV SCLGLGTWVT FGSQISDETA EDVLTVAYEH GVNLFDTAEV YAAGKAERTL GNILKSKGWR RSSYVITTKI FWGGQAETER GLSRKHIEG LRGSLERLQL GYVDIVFANR SDPNCPMEEI VRAMTYVINQ GLALYWGTSR WGAAEIMEAY SMARQFNLIP PVCEQAEHHL FQREKVEML PELYHKIGVG SVTWYPLACG LITSKYDGRV PDTCRASIKG YQWLKDKVQS EDGKKQQAKV MDLLPVAHQL GCTVAQLAIA WCLRSEGVSS VLLGVSSAEQ LIEHLGALQV LSQLTPTVM EIDGLLGKPK HSKK</p>
Characteristics:	Human KCNAB3 full-length ORF (NP_004723.2, 1 a.a. - 404 a.a.) recombinant protein with GST tag at N-terminal.
Purification:	in vitro wheat germ expression system

## Target Details

Target:	KCNAB3
Alternative Name:	KCNAB3 ( <a href="#">KCNAB3 Products</a> )
Background:	Full Gene Name: potassium voltage-gated channel, shaker-related subfamily, beta member 3 Synonyms: AKR6A9,KCNA3.1B,KCNA3B,KV-BETA-3,MGC116886
Gene ID:	9196
NCBI Accession:	<a href="#">NM_004732</a>

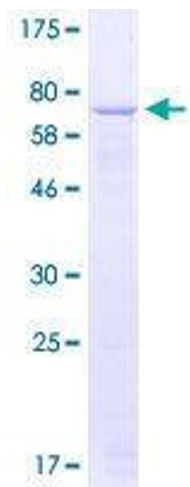
## Application Details

Application Notes:	Optimal working dilution should be determined by the investigator.
Comment:	Preparation method: in vitro, wheat germ expression system Product Quality tested by: 12.5% SDS-PAGE Stained with Coomassie Blue
Restrictions:	For Research Use only

## Handling

Buffer:	50 mM Tris-HCl, 10 mM reduced Glutathione, pH =8.0 in the elution buffer.
Handling Advice:	Aliquot to avoid repeated freezing and thawing.
Storage:	-80 °C
Storage Comment:	Best use within three months from the date of receipt of this protein.

## Images



**Image 1.**