

Datasheet for ABIN1308403

KCNE2 Protein (AA 73-123) (GST tag)



[Go to Product page](#)

1 Image

Overview

Quantity:	10 µg
Target:	KCNE2
Protein Characteristics:	AA 73-123
Origin:	Human
Source:	Wheat germ
Protein Type:	Recombinant
Purification tag / Conjugate:	This KCNE2 protein is labelled with GST tag.
Application:	ELISA, Western Blotting (WB), Affinity Purification (AP), Antibody Array (AA)

Product Details

Purpose:	KCNE2 (Human) Recombinant Protein (Q01)
Sequence:	KSKRREHSND PYHQYIVEDW QEKYKSQILN LEESKATIHE NIGAAGFKMS P
Characteristics:	Human KCNE2 partial ORF (NP_751951, 73 a.a. - 123 a.a.) recombinant protein with GST-tag at N-terminal.
Purification:	in vitro wheat germ expression system

Target Details

Target:	KCNE2
Alternative Name:	KCNE2 (KCNE2 Products)
Background:	Full Gene Name: potassium voltage-gated channel, Isk-related family, member 2

Target Details

Synonyms: LQT5,LQT6,MGC138292,MIRP1

Gene ID: 9992

NCBI Accession: [NM_172201](#)

Application Details

Application Notes: Optimal working dilution should be determined by the investigator.

Comment: Preparation method: in vitro, wheat germ expression system
Product Quality tested by: 12.5% SDS-PAGE Stained with Coomassie Blue.

Restrictions: For Research Use only

Handling

Buffer: 50 mM Tris-HCl, 10 mM reduced Glutathione, pH =8.0 in the elution buffer.

Handling Advice: Aliquot to avoid repeated freezing and thawing.

Storage: -80 °C

Storage Comment: Best use within three months from the date of receipt of this protein.

Images

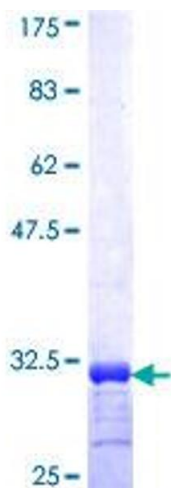


Image 1.