



Datasheet for ABIN1308405

## KCNE4 Protein (AA 1-170) (GST tag)



[Go to Product page](#)

### 1 Image

#### Overview

Quantity:	10 µg
Target:	KCNE4
Protein Characteristics:	AA 1-170
Origin:	Human
Source:	Wheat germ
Protein Type:	Recombinant
Purification tag / Conjugate:	This KCNE4 protein is labelled with GST tag.
Application:	ELISA, Western Blotting (WB), Affinity Purification (AP), Antibody Array (AA)

#### Product Details

Purpose:	KCNE4 (Human) Recombinant Protein (P01)
Sequence:	MLKMEPLNST HPGTAASSSP LESRAAGGGS GNGNEYFYIL VVMSFYGIFL IGIMLGVMKS KRREKKSSLL LLYKDEERLW GEAMKPLPVV SGLRSVQVPL MLNMLQESVA PALSCTLCSM EGDSVSSESS SPDVHLTIQE EGADEELEET SETPLNESSE GSSENIHQNS
Characteristics:	Human KCNE4 full-length ORF ( AAH14429, 1 a.a. - 170 a.a.) recombinant protein with GST-tag at N-terminal.
Purification:	in vitro wheat germ expression system

#### Target Details

Target:	KCNE4
Alternative Name:	KCNE4 ( <a href="#">KCNE4 Products</a> )

## Target Details

Background:	Full Gene Name: potassium voltage-gated channel, Isk-related family, member 4 Synonyms: MGC20353,MIRP3
Gene ID:	23704

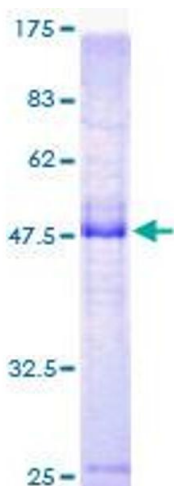
## Application Details

Application Notes:	Optimal working dilution should be determined by the investigator.
Comment:	Preparation method: in vitro, wheat germ expression system Product Quality tested by: 12.5% SDS-PAGE Stained with Coomassie Blue.
Restrictions:	For Research Use only

## Handling

Buffer:	50 mM Tris-HCl, 10 mM reduced Glutathione, pH =8.0 in the elution buffer.
Handling Advice:	Aliquot to avoid repeated freezing and thawing.
Storage:	-80 °C
Storage Comment:	Best use within three months from the date of receipt of this protein.

## Images



**Image 1.**