

Datasheet for ABIN1308415

KCNH2 Protein (AA 684-773) (GST tag)[Go to Product page](#)**1** Image

Overview

Quantity:	10 µg
Target:	KCNH2
Protein Characteristics:	AA 684-773
Origin:	Human
Source:	Wheat germ
Protein Type:	Recombinant
Purification tag / Conjugate:	This KCNH2 protein is labelled with GST tag.
Application:	ELISA, Western Blotting (WB), Affinity Purification (AP), Antibody Array (AA)

Product Details

Purpose:	KCNH2 (Human) Recombinant Protein (Q01)
Sequence:	LGMGWGAGTG LEMPSAASRG ASLLNMQSLG LWTWDCLQGH WAPLIHLNSG PPSGAMERSPTWGEAAELWG SHILLPFRIR HKQTLFASLK
Characteristics:	Human KCNH2 partial ORF (AAH01914, 684 a.a. - 773 a.a.) recombinant protein with GST-tag at N-terminal.
Purification:	in vitro wheat germ expression system

Target Details

Target:	KCNH2
Alternative Name:	KCNH2 (KCNH2 Products)

Target Details

Background:	Full Gene Name: potassium voltage-gated channel, subfamily H (eag-related), member 2 Synonyms: ERG1,HERG,HERG1,Kv11.1,LQT2,SQT1
Gene ID:	3757

Application Details

Application Notes:	Optimal working dilution should be determined by the investigator.
Comment:	Preparation method: in vitro, wheat germ expression system Product Quality tested by: 12.5% SDS-PAGE Stained with Coomassie Blue.
Restrictions:	For Research Use only

Handling

Buffer:	50 mM Tris-HCl, 10 mM reduced Glutathione, pH =8.0 in the elution buffer.
Handling Advice:	Aliquot to avoid repeated freezing and thawing.
Storage:	-80 °C
Storage Comment:	Best use within three months from the date of receipt of this protein.

Images

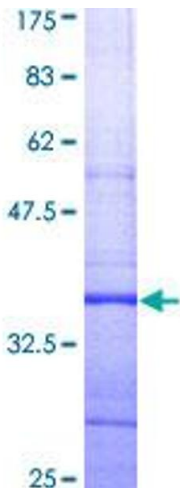


Image 1.