



Datasheet for ABIN1308447

## KCNJ2 Protein (AA 328-427) (GST tag)



[Go to Product page](#)

### 1 Image

#### Overview

Quantity:	10 µg
Target:	KCNJ2
Protein Characteristics:	AA 328-427
Origin:	Human
Source:	Wheat germ
Protein Type:	Recombinant
Purification tag / Conjugate:	This KCNJ2 protein is labelled with GST tag.
Application:	ELISA, Western Blotting (WB), Affinity Purification (AP), Antibody Array (AA)

#### Product Details

Purpose:	KCNJ2 (Human) Recombinant Protein (Q01)
Sequence:	PVLFEEKHYH KVDYSRFHKT YEVPNTPLCS ARDLAEKKYI LSNANSFCYE NEVALTSKEE DDSENGVPES TSTDTPPDID LHNQASVPLE PRPLRRESEI
Characteristics:	Human KCNJ2 partial ORF ( NP_000882, 328 a.a. - 427 a.a.) recombinant protein with GST-tag at N-terminal.
Purification:	in vitro wheat germ expression system

#### Target Details

Target:	KCNJ2
Alternative Name:	KCNJ2 ( <a href="#">KCNJ2 Products</a> )

## Target Details

Background:	Full Gene Name: potassium inwardly-rectifying channel, subfamily J, member 2 Synonyms: HHBIRK1,HHIRK1,IRK1,KIR2.1,LQT7,SQT3
Gene ID:	3759
NCBI Accession:	<a href="#">NM_000891</a>

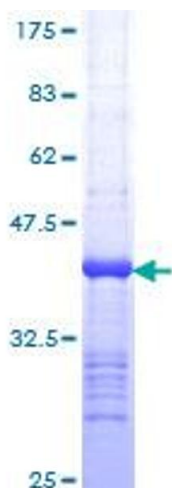
## Application Details

Application Notes:	Optimal working dilution should be determined by the investigator.
Comment:	Preparation method: in vitro, wheat germ expression system Product Quality tested by: 12.5% SDS-PAGE Stained with Coomassie Blue.
Restrictions:	For Research Use only

## Handling

Buffer:	50 mM Tris-HCl, 10 mM reduced Glutathione, pH =8.0 in the elution buffer.
Handling Advice:	Aliquot to avoid repeated freezing and thawing.
Storage:	-80 °C
Storage Comment:	Best use within three months from the date of receipt of this protein.

## Images



**Image 1.**