

Datasheet for ABIN1308470  
**KCNMB4 Protein (AA 1-210) (GST tag)**



[Go to Product page](#)

1 Image

Overview

|                               |   |
|-------------------------------|---|
| Quantity:                     | 10 µg   |
| Target:                       | KCNMB4  |
| Protein Characteristics:      | AA 1-210  |
| Origin:                       | Human   |
| Source:                       | Wheat germ  |
| Protein Type:                 | Recombinant   |
| Purification tag / Conjugate: | This KCNMB4 protein is labelled with GST tag.                                 |
| Application:                  | ELISA, Western Blotting (WB), Affinity Purification (AP), Antibody Array (AA) |

Product Details

|                  |   |
|------------------|---|
| Purpose:         | KCNMB4 (Human) Recombinant Protein (P01)  |
| Sequence:        | MAKLRVAYEY TEAEDKSIRL GLFLIISGVV SLFIFGFCWL SPALQDLQAT EANCTVLSVQ<br>QIGEVFECTF TCGADCRGTS QYPCVQVYVN NSESNSRALL HSDEHQLLTN PKCSYIPPCK<br>RENQKNLESV MNWQQYWKDE IGSQPFTCYF NQHQRPDVVL LHRTHDEIVL LHCFLWPLVT<br>FVVGVLIVVL TICAKSLAVK AEAMKKRKFS |
| Characteristics: | Human KCNMB4 full-length ORF ( AAH50621, 1 a.a. - 210 a.a.) recombinant protein with GST-tag at N-terminal.   |
| Purification:    | in vitro wheat germ expression system   |

Target Details

|         |        |
|---------|--------|
| Target: | KCNMB4 |
|---------|--------|

## Target Details

|                   |  |
|-------------------|--|
| Alternative Name: | KCNMB4 ( <a href="#">KCNMB4 Products</a> )   |
| Background:       | Full Gene Name: potassium large conductance calcium-activated channel, subfamily M, beta member 4<br>Synonyms: |
| Gene ID:          | 27345  |

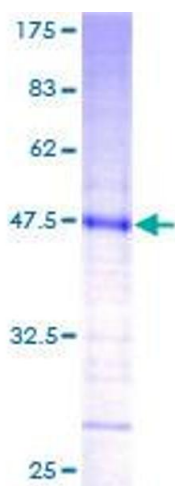
## Application Details

|                    |  |
|--------------------|--|
| Application Notes: | Optimal working dilution should be determined by the investigator.   |
| Comment:           | Preparation method: in vitro, wheat germ expression system<br>Product Quality tested by: 12.5% SDS-PAGE Stained with Coomassie Blue. |
| Restrictions:      | For Research Use only  |

## Handling

|                  |   |
|------------------|---|
| Buffer:          | 50 mM Tris-HCl, 10 mM reduced Glutathione, pH =8.0 in the elution buffer. |
| Handling Advice: | Aliquot to avoid repeated freezing and thawing.                           |
| Storage:         | -80 °C  |
| Storage Comment: | Best use within three months from the date of receipt of this protein.    |

## Images



**Image 1.**