



[Go to Product page](#)

Datasheet for ABIN1308475

KCNN3 Protein (AA 301-410) (GST tag)

1 Image

Overview

Quantity:	10 µg
Target:	KCNN3
Protein Characteristics:	AA 301-410
Origin:	Human
Source:	Wheat germ
Protein Type:	Recombinant
Purification tag / Conjugate:	This KCNN3 protein is labelled with GST tag.
Application:	ELISA, Western Blotting (WB), Affinity Purification (AP), Antibody Array (AA)

Product Details

Purpose:	KCNN3 (Human) Recombinant Protein (Q01)
Sequence:	QAIHQLRVSK MEQRKLSLQA NTLVDLSKMQ NVMYDLITEL NDRSEDLEKQ IGSLESKLEH LTASFNSLPL LIADTLRQQQ QQLLSAII EA RGVSVAVGTT HTPISDSPIG
Characteristics:	Human KCNN3 partial ORF (NP_740752, 301 a.a. - 410 a.a.) recombinant protein with GST-tag at N-terminal.
Purification:	in vitro wheat germ expression system

Target Details

Target:	KCNN3
Alternative Name:	KCNN3 (KCNN3 Products)

Target Details

Background:	Gene: potassium intermediate/small conductance calcium-activated channel, subfamily N, member 3 Synonyms: KCa2.3, SK3, SKCA3, hSK3
Gene ID:	3782
NCBI Accession:	NM_170782

Application Details

Application Notes:	Optimal working dilution should be determined by the investigator.
Restrictions:	For Research Use only

Handling

Buffer:	50 mM Tris-HCl, 10 mM reduced Glutathione, pH =8.0 in the elution buffer.
Handling Advice:	Aliquot to avoid repeated freezing and thawing.
Storage:	-80 °C
Storage Comment:	Best use within three months from the date of receipt of this protein.

Images

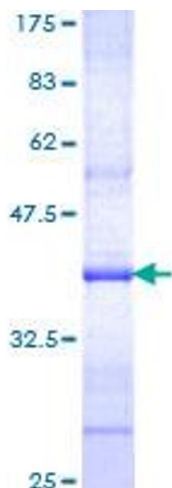


Image 1.