

Datasheet for ABIN1308477

## KCNN4 Protein (AA 328-427) (GST tag)



[Go to Product page](#)

### 1 Image

#### Overview

Quantity:	25 µg
Target:	KCNN4
Protein Characteristics:	AA 328-427
Origin:	Human
Source:	Wheat germ
Protein Type:	Recombinant
Purification tag / Conjugate:	This KCNN4 protein is labelled with GST tag.
Application:	ELISA, Western Blotting (WB), Affinity Purification (AP), Antibody Array (AA)

#### Product Details

Purpose:	KCNN4 (Human) Recombinant Protein (Q01)
Sequence:	HTRRKESHAA RRHQRKLLAA INAFRQVRLK HRKLREQVNS MVDISKMHMI LYDLQQNLSS SHRALEKQID TLAGKLDALT ELLSTALGPR QLPEPSQQSK
Characteristics:	Human KCNN4 partial ORF ( AAH15337, 328 a.a. - 427 a.a.) recombinant protein with GST-tag at N-terminal.
Purification:	in vitro wheat germ expression system

#### Target Details

Target:	KCNN4
Alternative Name:	KCNN4 ( <a href="#">KCNN4 Products</a> )

## Target Details

Background:	Full Gene Name: potassium intermediate/small conductance calcium-activated channel, subfamily N, member 4 Synonyms: IK1,IKCA1,KCA4,KCa3.1,SK4,hIKCa1,hKCa4,hSK4
Gene ID:	3783

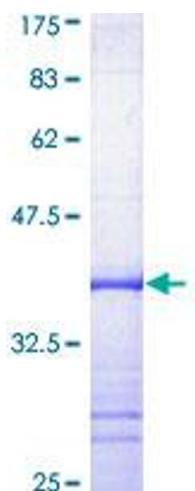
## Application Details

Application Notes:	Optimal working dilution should be determined by the investigator.
Comment:	Preparation method: in vitro, wheat germ expression system Product Quality tested by: 12.5% SDS-PAGE Stained with Coomassie Blue.
Restrictions:	For Research Use only

## Handling

Buffer:	50 mM Tris-HCl, 10 mM reduced Glutathione, pH =8.0 in the elution buffer.
Handling Advice:	Aliquot to avoid repeated freezing and thawing.
Storage:	-80 °C
Storage Comment:	Best use within three months from the date of receipt of this protein.

## Images



**Image 1.**