



[Go to Product page](#)

Datasheet for ABIN1308488

KCNV1 Protein (AA 1-500) (GST tag)

1 Image

Overview

Quantity:	10 µg
Target:	KCNV1
Protein Characteristics:	AA 1-500
Origin:	Human
Source:	Wheat germ
Protein Type:	Recombinant
Purification tag / Conjugate:	This KCNV1 protein is labelled with GST tag.
Application:	ELISA, Western Blotting (WB), Affinity Purification (AP), Antibody Array (AA)

Product Details

Purpose:	KCNV1 (Human) Recombinant Protein (P01)
Sequence:	MPSSGRALLD SPLDSGSLTS LGSSVFCSEG EGEPLALGDC FTVNVGGSRF VLSQQALSCF PHTRLGKLAV VVASYRRPGA LAAVPSPLEL CDDANPVDNE YFFDRSSQAF RYVLHYYRTG RLHVMEQLCA LSFLQEIQYW GIDELSIDSC CRDRYFRRKE LSETLDFKKD TEDQESQHES EQDFSQGPCP TVRQKLWNIL EKPGSSTAAR IFGVISIIFV VVSIINMALM SAELSWLDLQ LLEILEYVCI SWFTGEFVLR FLCVRDRCRF LRKVPNIIDL LAILPFYITL LVESLSGSQT TQELENVGR VQVLRLLRAL RMLKLGRHST GLRSLGMTIT QCYEEVGLLL LFLSVGISIF STVEYFAEQS IPDTTFTSVP CAWWWATTSM TTVGYGDIRP DTTTGKIVAF MCILSGILVL ALPIAIINDR FSACYFTLKL KEAAVRQREA LKKLTKNIAT DSYISVNLRD VYARSIMEML RLKGRERAST RSSGGDDFWF
Characteristics:	Human KCNV1 full-length ORF (AAH28739.1, 1 a.a. - 500 a.a.) recombinant protein with GST-tag at N-terminal.

Product Details

Purification: in vitro wheat germ expression system

Target Details

Target: KCNV1

Alternative Name: KCNV1 ([KCNV1 Products](#))

Background: Full Gene Name: potassium channel, subfamily V, member 1
Synonyms: HNKA,KCNB3,KV2.3,KV8.1

Gene ID: 27012

Application Details

Application Notes: Optimal working dilution should be determined by the investigator.

Comment: Preparation method: in vitro, wheat germ expression system
Product Quality tested by: 12.5% SDS-PAGE Stained with Coomassie Blue.

Restrictions: For Research Use only

Handling

Buffer: 50 mM Tris-HCl, 10 mM reduced Glutathione, pH =8.0 in the elution buffer.

Handling Advice: Aliquot to avoid repeated freezing and thawing.

Storage: -80 °C

Storage Comment: Best use within three months from the date of receipt of this protein.

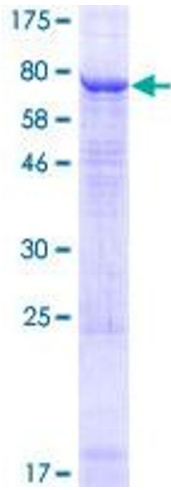


Image 1.