

Datasheet for ABIN1308501

KCTD18 Protein (AA 1-426) (GST tag)



[Go to Product page](#)

1 Image

Overview

Quantity:	10 µg
Target:	KCTD18
Protein Characteristics:	AA 1-426
Origin:	Human
Source:	Wheat germ
Protein Type:	Recombinant
Purification tag / Conjugate:	This KCTD18 protein is labelled with GST tag.
Application:	ELISA, Western Blotting (WB), Affinity Purification (AP), Antibody Array (AA)

Product Details

Purpose:	KCTD18 (Human) Recombinant Protein (P01)
Sequence:	MEGHKAEDEV LDVLRNLVGG CIYTARRESL CRFKDSMLAS MFSGRFPLKT DESGACVIDR DGRLFYKLLD YLHGEVQIPT DEQTRIALQE EADYFGIPYP YSLSDHLANE METYSLRSNI ELKKALTDFC DSYGLVCNKP TVWVLHYLNT SGASCESRII GVIATKTDGT DAIEKQLGGR IHSKGIFKRE AGNNVQYIWS YYSVAELKKM MDAFDAWEGK GVSYWRVPHE LIECWTLLEER PLLGSLRHMA PIRKRLITF NEADESVNYK TGPKPVRFLG PSTSTQIKVK NSASVTVSPA SAIQTSAGAT ANRFQSGSRR KAAQRSAPSR ATALVGTGAP GHPQASPGAA SAENGGTHLP PAKVLLSDKK PTPQRVIKLLK RTPLCATAPC LPSPTATRQA NSLKPLGPA ARALGVR TEN GKNKGN
Characteristics:	Human KCTD18 full-length ORF (NP_689600.2, 1 a.a. - 426 a.a.) recombinant protein with GST-tag at N-terminal.

Product Details

Purification: in vitro wheat germ expression system

Target Details

Target: KCTD18

Alternative Name: KCTD18 ([KCTD18 Products](#))

Background: Full Gene Name: potassium channel tetramerisation domain containing 18
Synonyms: 6530404F10Rik,FLJ31322,FLJ37818

Gene ID: 130535

NCBI Accession: [NM_152387](#)

Application Details

Application Notes: Optimal working dilution should be determined by the investigator.

Comment: Preparation method: in vitro, wheat germ expression system
Product Quality tested by: 12.5% SDS-PAGE Stained with Coomassie Blue.

Restrictions: For Research Use only

Handling

Buffer: 50 mM Tris-HCl, 10 mM reduced Glutathione, pH =8.0 in the elution buffer.

Handling Advice: Aliquot to avoid repeated freezing and thawing.

Storage: -80 °C

Storage Comment: Best use within three months from the date of receipt of this protein.

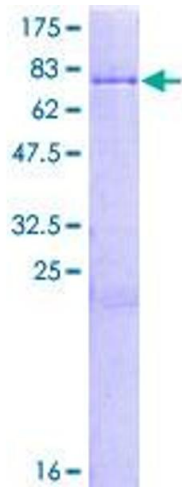


Image 1.