



[Go to Product page](#)

Datasheet for ABIN1308510

KCTD9 Protein (AA 1-389) (GST tag)

1 Image

Overview

Quantity:	10 µg
Target:	KCTD9
Protein Characteristics:	AA 1-389
Origin:	Human
Source:	Wheat germ
Protein Type:	Recombinant
Purification tag / Conjugate:	This KCTD9 protein is labelled with GST tag.
Application:	ELISA, Western Blotting (WB), Affinity Purification (AP), Antibody Array (AA)

Product Details

Purpose:	KCTD9 (Human) Recombinant Protein (P01)
Sequence:	MRRVTLFLNG SPKNGKVVAV YGTLSDLLSV ASSKLGIKAT SVYNGKGGGLI DDIALIRDDD VLFVCEGEPF IDPQTDSKPP ELLGFHTDW LTLNVGGRYF TTTRSTLVNK EPDSMLAHMF KDKGVWGNKQ DHRGAFLIDR SPEYFEPILN YLRHGQLIVN DGINLLGVLE EARFFGIDSL IEHLEVAIKN SQPPEDHSPI SRKEFVRFLL ATPKSELRC QGLNFSGADL SRLDLRYINF KMANLSRCNL AHANLCCANL ERADLSGSVL DCANLQGVKM LCSNAEGASL KLCNFEDPSG LKANLEGANL KGVDMEGSQM TGINLRVATL KNAKLNKCNL RGATLAGTDL ENCDLSGCDL QEANLRGSNV KGAIFEEMLT PLHMSQSVR
Characteristics:	Human KCTD9 full-length ORF (AAH21216, 1 a.a. - 389 a.a.) recombinant protein with GST-tag at N-terminal.
Purification:	in vitro wheat germ expression system

Target Details

Target:	KCTD9
Alternative Name:	KCTD9
Background:	Full Gene Name: potassium channel tetramerisation domain containing 9 Synonyms: FLJ20038
Gene ID:	54793

Application Details

Application Notes:	Optimal working dilution should be determined by the investigator.
Comment:	Preparation method: in vitro, wheat germ expression system Product Quality tested by: 12.5% SDS-PAGE Stained with Coomassie Blue.
Restrictions:	For Research Use only

Handling

Buffer:	50 mM Tris-HCl, 10 mM reduced Glutathione, pH =8.0 in the elution buffer.
Handling Advice:	Aliquot to avoid repeated freezing and thawing.
Storage:	-80 °C
Storage Comment:	Best use within three months from the date of receipt of this protein.

Images

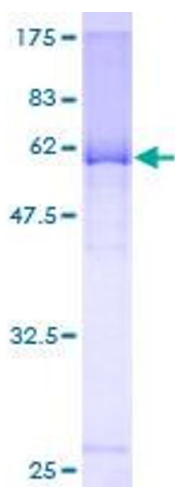


Image 1.